

Product datasheet for **TA383888**

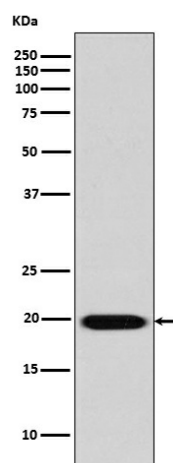
Caveolin 2 (CAV2) Rabbit Polyclonal Antibody

Product data:

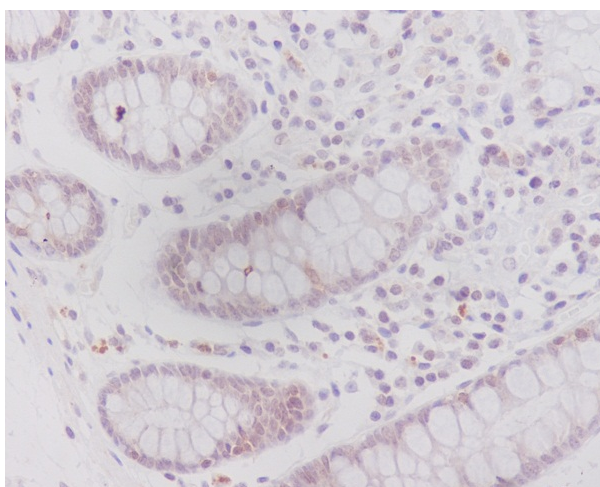
Product Type:	Primary Antibodies
Applications:	IF, IHC, IP, WB
Recommended Dilution:	WB: 1/500-1/2000 IHC: 1/50-1/200 ICC/IF: 1/50-1/200 IP: 1/50
Reactivity:	Human
Host:	Rabbit
Isotype:	IgG
Clonality:	Polyclonal
Immunogen:	A synthesized peptide derived from human Caveolin-2
Formulation:	Rabbit IgG in phosphate buffered saline , pH 7.4, 150mM NaCl, 0.02% sodium azide and 50% glycerol.
Concentration:	lot specific
Purification:	Affinity Chromatography
Conjugation:	Unconjugated
Storage:	Store at 4°C short term. Aliquot and store at -20°C long term. Avoid freeze/thaw cycles.
Stability:	1 year
Predicted Protein Size:	18kDa
Gene Name:	caveolin 2
Database Link:	Entrez Gene 858 Human P51636
Background:	Swiss-Prot Acc.P51636.May act as a scaffolding protein within caveolar membranes. Interacts directly with G-protein alpha subunits and can functionally regulate their activity. Acts as an accessory protein in conjunction with CAV1 in targeting to lipid rafts and driving caveolae formation.
Synonyms:	CAV; MGC12294



[View online »](#)

Product images:

Western blot analysis of Caveolin 2 in HeLa lysates using Caveolin 2 antibody.



Immunohistochemistry analysis of paraffin-embedded Human colon using Caveolin2 antibody. High-pressure and temperature Sodium Citrate pH 6.0 was used for antigen retrieval.