

Product datasheet for **TA383887**

Caveolin 1 (CAV1) Rabbit Monoclonal Antibody [Clone ID: R01-9C9]

Product data:

Product Type:	Primary Antibodies
Clone Name:	R01-9C9
Applications:	IHC, WB
Recommended Dilution:	WB: 1/1000-1/5000 IHC: 1/20
Reactivity:	Human
Host:	Rabbit
Isotype:	IgG
Clonality:	Monoclonal
Immunogen:	A synthetic peptide of human Caveolin-1
Formulation:	50mM Tris-Glycine(pH 7.4), 0.15M NaCl, 40% Glycerol, 0.01% Sodium azide and 0.05% BSA
Concentration:	lot specific
Purification:	Affinity Purified
Conjugation:	Unconjugated
Storage:	Store at 4°C short term. Aliquot and store at -20°C long term. Avoid freeze/thaw cycles.
Stability:	1 year
Predicted Protein Size:	Calculated MW: 20 kDa; Observed MW: 20 kDa
Gene Name:	caveolin 1
Database Link:	Entrez Gene 857 Human Q03135



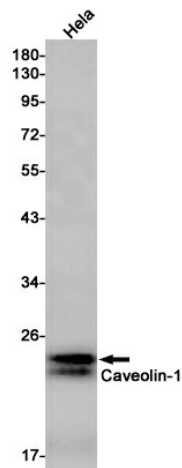
[View online »](#)

Background:

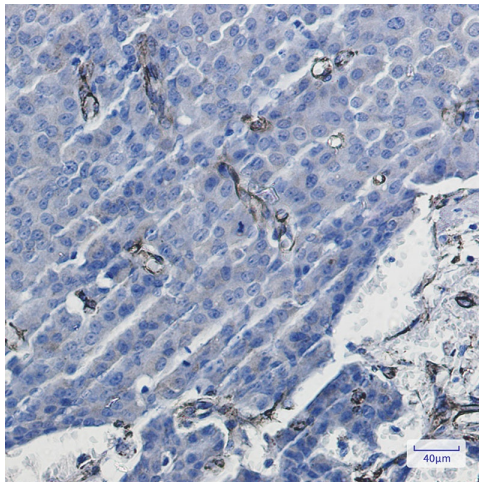
Swiss-Prot Acc.Q03135. May act as a scaffolding protein within caveolar membranes. Interacts directly with G-protein alpha subunits and can functionally regulate their activity. Involved in the costimulatory signal essential for T-cell receptor (TCR)-mediated T-cell activation. Its binding to DPP4 induces T-cell proliferation and NF-kappa-B activation in a T-cell receptor/CD3-dependent manner. Recruits CTNNB1 to caveolar membranes and may regulate CTNNB1-mediated signaling through the Wnt pathway. Negatively regulates TGFβ1-mediated activation of SMAD2/3 by mediating the internalization of TGFβR1 from membrane rafts leading to its subsequent degradation (PubMed:25893292). Mediates the recruitment of CAVIN proteins (CAVIN1/2/3/4) to the caveolae (PubMed:19262564).

Synonyms:

BSCL3; CAV; CGL3; MSTP085; VIP21

Product images:


Western blot detection of Caveolin-1 in HeLa cell lysates using Caveolin-1 Rabbit mAb(1:1000 diluted). Predicted band size:20kDa. Observed band size:20kDa.



Immunohistochemistry analysis of paraffin-embedded Human breast cancer using Caveolin1 antibody. High-pressure and temperature Sodium Citrate pH 6.0 was used for antigen retrieval.