

Product datasheet for **TA383885**

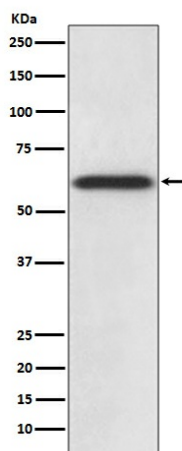
Catalase (CAT) Rabbit Polyclonal Antibody

Product data:

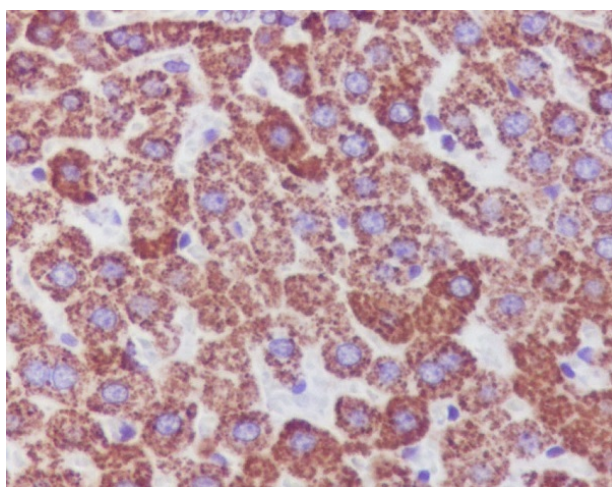
Product Type:	Primary Antibodies
Applications:	IHC, WB
Recommended Dilution:	WB: 1/500-1/1000 IHC: 1/50-1/200
Reactivity:	Human, Mouse, Rat
Host:	Rabbit
Isotype:	IgG
Clonality:	Polyclonal
Immunogen:	A synthesized peptide derived from human Catalase
Formulation:	Rabbit IgG in phosphate buffered saline , pH 7.4, 150mM NaCl, 0.02% sodium azide and 50% glycerol.
Concentration:	lot specific
Purification:	Affinity Chromatography
Conjugation:	Unconjugated
Storage:	Store at 4°C short term. Aliquot and store at -20°C long term. Avoid freeze/thaw cycles.
Stability:	1 year
Predicted Protein Size:	60kDa
Gene Name:	catalase
Database Link:	Entrez Gene 847 Human P04040
Background:	Swiss-Prot Acc.P04040.Catalase catalyzes the conversion of hydrogen peroxide to water and oxygen. Research studies show that overexpression of this antioxidant enzyme increases the ability of pancreatic β -cells to scavenge reactive oxygen species (ROS), thereby protecting pancreatic β -cells from oxidative stress.
Synonyms:	catalase; MGC138422; MGC138424



[View online »](#)

Product images:

Western blot analysis of Catalase in HepG2 lysates using Catalase antibody.



Immunohistochemistry analysis of paraffin-embedded rat liver using Catalase antibody. High-pressure and temperature Sodium Citrate pH 6.0 was used for antigen retrieval.