

Product datasheet for **TA383882**

Caspase 8 (CASP8) Rabbit Polyclonal Antibody

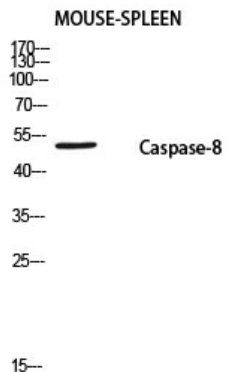
Product data:

Product Type:	Primary Antibodies
Applications:	ELISA, WB
Recommended Dilution:	WB: 1/500-1/2000 ELISA: 1/10000
Reactivity:	Human
Host:	Rabbit
Isotype:	IgG
Clonality:	Polyclonal
Immunogen:	Synthesized peptide derived from Cleaved-Caspase-8 p18 (S217) . at AA range: 170-250 (Cleaved)
Formulation:	Liquid in PBS containing 50% glycerol, 0.5% BSA and 0.02% sodium azide, pH 7.3.
Concentration:	lot specific
Purification:	Affinity Purified
Conjugation:	Unconjugated
Storage:	Store at 4°C short term. Aliquot and store at -20°C long term. Avoid freeze/thaw cycles.
Stability:	1 year
Predicted Protein Size:	Observed MW (kDa):54
Gene Name:	caspase 8
Database Link:	Entrez Gene 841 Human Q14790
Background:	Swiss-Prot Acc.Q14790.
Synonyms:	ALPS2B; CAP4; Casp-8; FLICE; FLJ17672; MACH; MCH5; MGC78473; OTTHUMP00000163720

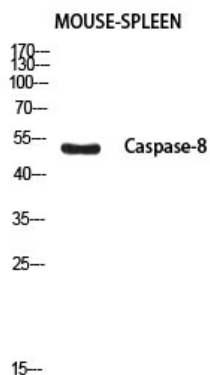


[View online »](#)

Product images:



Western blot analysis of MOUSE-SPLEEN using Caspase-8 P18 antibody. Antibody was diluted at 1:1000. Secondary antibody was diluted at 1:20000



Western blot analysis of MOUSE-SPLEEN using Cleaved-Caspase-8 p18 (S217) antibody. Antibody was diluted at 1:1000. Secondary antibody was diluted at 1:20000