

Product datasheet for **TA383880**

Caspase-6 (CASP6) Rabbit Polyclonal Antibody

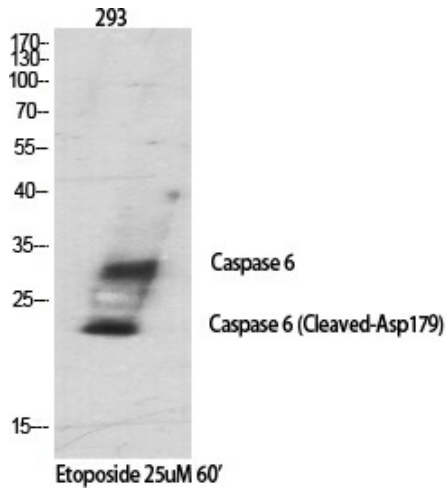
Product data:

Product Type:	Primary Antibodies
Applications:	ELISA, IHC, WB
Recommended Dilution:	WB: 1/500-1/2000 IHC: 1/100-1/300 ELISA: 1/40000
Reactivity:	Human, Rat
Host:	Rabbit
Isotype:	IgG
Clonality:	Polyclonal
Immunogen:	The antiserum was produced against synthesized peptide derived from human Caspase 6. AA range:130-179 (Cleaved)
Formulation:	Liquid in PBS containing 50% glycerol, 0.5% BSA and 0.02% sodium azide, pH 7.3.
Concentration:	lot specific
Purification:	Affinity Chromatography
Conjugation:	Unconjugated
Storage:	Store at 4°C short term. Aliquot and store at -20°C long term. Avoid freeze/thaw cycles.
Stability:	1 year
Predicted Protein Size:	Observed MW (kDa):20/35
Gene Name:	caspase 6
Database Link:	Entrez Gene 839 Human P55212
Background:	Swiss-Prot Acc.P55212.Involved in the activation cascade of caspases responsible for apoptosis execution. Cleaves poly(ADP-ribose) polymerase in vitro, as well as lamins. Overexpression promotes programmed cell death.
Synonyms:	CASP-6; MCH2

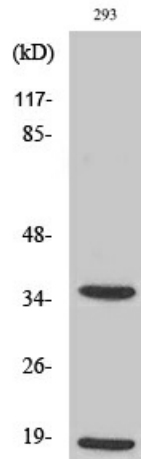


[View online »](#)

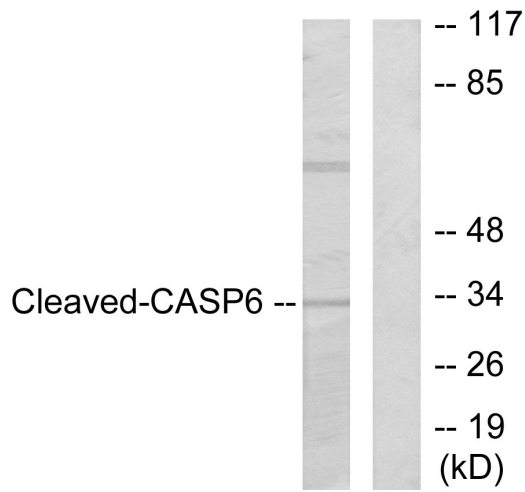
Product images:



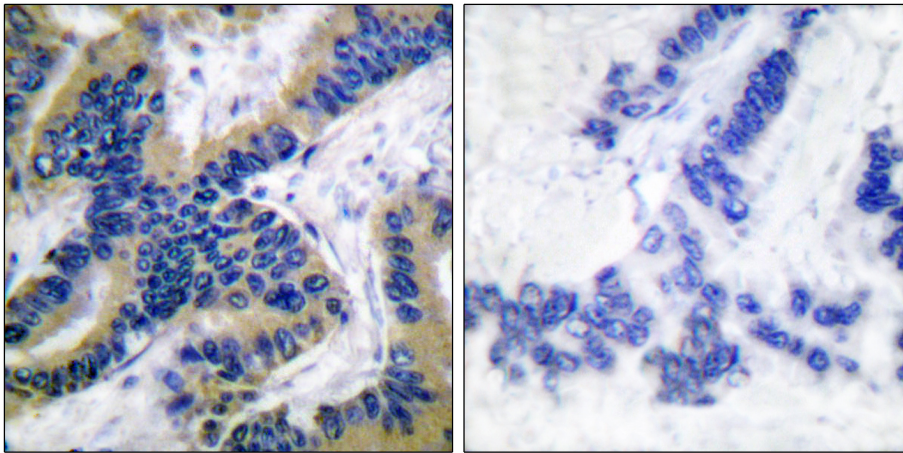
Western blot analysis of Cleaved-Caspase 6 p18 in various lysates using Cleaved-Caspase 6 p18 antibody.



Western blot analysis of Cleaved-Caspase 6 p18 in 293 lysates using Cleaved-Caspase6 p18 (D179) antibody.



Western blot analysis of Cleaved-Caspase 6 p18 in 293 lysates treated with Etoposide using Cleaved-Caspase 6 p18 antibody. The lane on the right is blocked with the synthesized peptide.



Immunohistochemistry analysis of paraffin-embedded Human lung carcinoma tissue using Caspase 6 (Cleaved-Asp16, 2) antibody. High-pressure and temperature Sodium Citrate pH 6.0 was used for antigen retrieval. Sample with blocking peptide on the right.