

Product datasheet for TA383877S

Caspase 3 (CASP3) Rabbit Monoclonal Antibody [Clone ID: R04-5C8]

Product data:

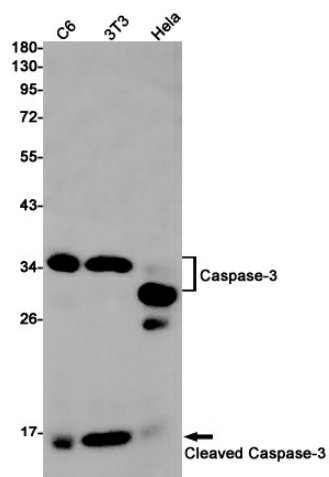
| | |
|-------------------------|---|
| Product Type: | Primary Antibodies |
| Clone Name: | R04-5C8 |
| Applications: | WB |
| Recommended Dilution: | WB: 1/1000 |
| Reactivity: | Mouse, Human, Rat |
| Host: | Rabbit |
| Isotype: | IgG |
| Clonality: | Monoclonal |
| Immunogen: | A synthetic peptide of mouse Caspase-3 (Cleaved) |
| Formulation: | 50mM Tris-Glycine(pH 7.4), 0.15M NaCl, 40% Glycerol, 0.01% Sodium azide and 0.05% BSA |
| Concentration: | lot specific |
| Purification: | Affinity Purified |
| Conjugation: | Unconjugated |
| Storage: | Store at 4°C short term. Aliquot and store at -20°C long term. Avoid freeze/thaw cycles. |
| Stability: | 1 year |
| Predicted Protein Size: | Calculated MW: 32 kDa; Observed MW: 32,17 kDa |
| Gene Name: | caspase 3 |
| Database Link: | Entrez Gene 836 Human P42574 |
| Background: | Swiss-Prot Acc.P70677.Involved in the activation cascade of caspases responsible for apoptosis execution. At the onset of apoptosis it proteolytically cleaves poly(ADP-ribose) polymerase (PARP) at a '216-Asp- -Gly-217' bond. Cleaves and activates sterol regulatory element binding proteins (SREBPs) between the basic helix-loop-helix leucine zipper domain and the membrane attachment domain. Cleaves and activates caspase-6, -7 and -9. Triggers cell adhesion in sympathetic neurons through RET cleavage . Cleaves IL-1 beta between an Asp and an Ala, releasing the mature cytokine which is involved in a variety of inflammatory processes. |



[View online »](#)

Synonyms: apopain; CASP-3; CPP-32; CPP32; CPP32B; procaspase3; SCA-1; Yama

Product images:



Western blot detection of Caspase-3 in C6,3T3,HeLa cell lysates using Caspase-3 Rabbit mAb(1:1000 diluted).Predicted band size:32kDa.Observed band size:32/17kDa.