

## Product datasheet for **TA383877M**

### Caspase 3 (CASP3) Rabbit Monoclonal Antibody [Clone ID: R04-5C8]

#### Product data:

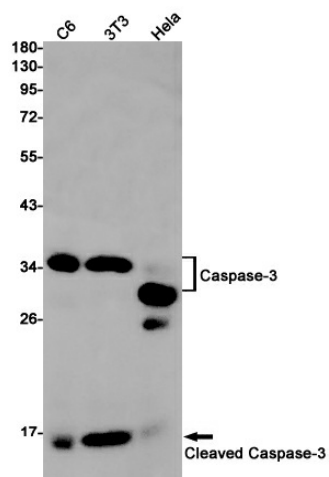
Product Type:	Primary Antibodies
Clone Name:	R04-5C8
Applications:	WB
Recommended Dilution:	WB: 1/1000
Reactivity:	Mouse, Human, Rat
Host:	Rabbit
Isotype:	IgG
Clonality:	Monoclonal
Immunogen:	A synthetic peptide of mouse Caspase-3 (Cleaved)
Formulation:	50mM Tris-Glycine(pH 7.4), 0.15M NaCl, 40% Glycerol, 0.01% Sodium azide and 0.05% BSA
Concentration:	lot specific
Purification:	Affinity Purified
Conjugation:	Unconjugated
Storage:	Store at 4°C short term. Aliquot and store at -20°C long term. Avoid freeze/thaw cycles.
Stability:	1 year
Predicted Protein Size:	Calculated MW: 32 kDa; Observed MW: 32,17 kDa
Gene Name:	caspase 3
Database Link:	<a href="#">Entrez Gene 836 Human P42574</a>
Background:	Swiss-Prot Acc.P70677.Involved in the activation cascade of caspases responsible for apoptosis execution. At the onset of apoptosis it proteolytically cleaves poly(ADP-ribose) polymerase (PARP) at a '216-Asp- -Gly-217' bond. Cleaves and activates sterol regulatory element binding proteins (SREBPs) between the basic helix-loop-helix leucine zipper domain and the membrane attachment domain. Cleaves and activates caspase-6, -7 and -9. Triggers cell adhesion in sympathetic neurons through RET cleavage . Cleaves IL-1 beta between an Asp and an Ala, releasing the mature cytokine which is involved in a variety of inflammatory processes.



[View online »](#)

**Synonyms:** apopain; CASP-3; CPP-32; CPP32; CPP32B; procaspase3; SCA-1; Yama

**Product images:**



Western blot detection of Caspase-3 in C6,3T3,HeLa cell lysates using Caspase-3 Rabbit mAb(1:1000 diluted).Predicted band size:32kDa.Observed band size:32/17kDa.