

Product datasheet for **TA383875**

Caspase 3 (CASP3) Rabbit Monoclonal Antibody [Clone ID: R08-6F2]

Product data:

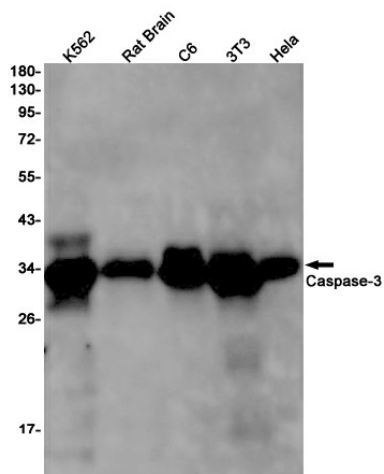
Product Type:	Primary Antibodies
Clone Name:	R08-6F2
Applications:	IHC, IP, WB
Recommended Dilution:	WB: 1/1000 IHC: 1/50 IP: 1/20
Reactivity:	Human, Mouse, Rat
Host:	Rabbit
Isotype:	IgG
Clonality:	Monoclonal
Immunogen:	Recombinant protein of human Caspase-3
Formulation:	50mM Tris-Glycine(pH 7.4), 0.15M NaCl, 40% Glycerol, 0.01% Sodium azide and 0.05% BSA
Concentration:	lot specific
Purification:	Affinity Purified
Conjugation:	Unconjugated
Storage:	Store at 4°C short term. Aliquot and store at -20°C long term. Avoid freeze/thaw cycles.
Stability:	1 year
Predicted Protein Size:	Calculated MW: 32 kDa; Observed MW: 32 kDa
Gene Name:	caspase 3
Database Link:	Entrez Gene 836 Human P42574
Background:	Swiss-Prot Acc.P42574.Involved in the activation cascade of caspases responsible for apoptosis execution. At the onset of apoptosis it proteolytically cleaves poly(ADP-ribose) polymerase (PARP) at a '216-Asp- -Gly-217' bond. Cleaves and activates sterol regulatory element binding proteins (SREBPs) between the basic helix-loop-helix leucine zipper domain and the membrane attachment domain. Cleaves and activates caspase-6, -7 and -9. Involved in the cleavage of huntingtin. Triggers cell adhesion in sympathetic neurons through RET cleavage.



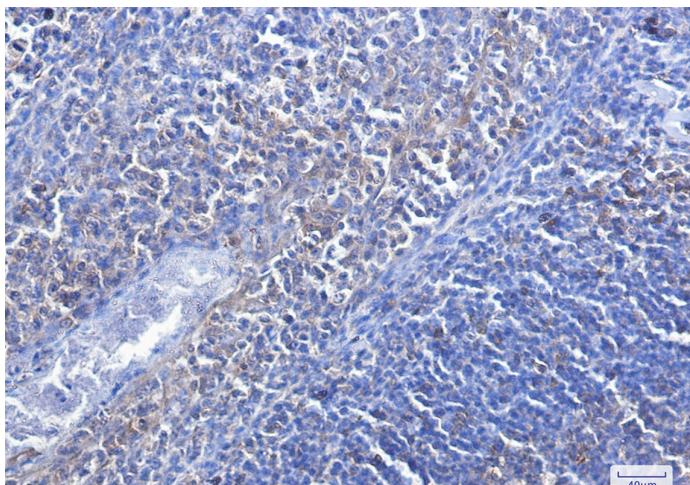
[View online »](#)

Synonyms: apopain; CASP-3; CPP-32; CPP32; CPP32B; procaspase3; SCA-1; Yama

Product images:



Western blot analysis of Caspase3 in K562, rat Brain, C6, 3T3, HeLa lysates using Caspase 3 antibody.



Immunohistochemistry analysis of paraffin-embedded Human tonsil using Caspase3 antibody. High-pressure and temperature Sodium Citrate pH 6.0 was used for antigen retrieval.