

## Product datasheet for **TA383873S**

### Caspase 3 (CASP3) Rabbit Polyclonal Antibody

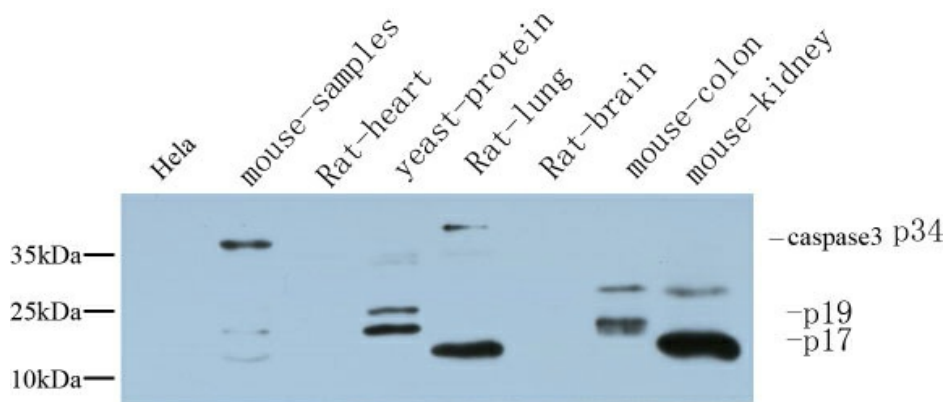
#### Product data:

Product Type:	Primary Antibodies
Applications:	ELISA, IF, IHC, WB
Recommended Dilution:	WB: 1/500-2000
Reactivity:	Human, Mouse, Rat
Host:	Rabbit
Isotype:	IgG
Clonality:	Polyclonal
Immunogen:	The antiserum was produced against synthesized peptide derived from human Caspase 3. AA range:126-175 (Cleaved)
Formulation:	Liquid in PBS containing 50% glycerol, 0.5% BSA and 0.02% sodium azide, pH 7.3.
Concentration:	lot specific
Purification:	Affinity Purified
Conjugation:	Unconjugated
Storage:	Store at 4°C short term. Aliquot and store at -20°C long term. Avoid freeze/thaw cycles.
Stability:	1 year
Predicted Protein Size:	17 kDa
Gene Name:	caspase 3
Database Link:	<a href="#">Entrez Gene 836 Human P42574</a>
Background:	Swiss-Prot Acc.P42574.
Synonyms:	apopain; CASP-3; CPP-32; CPP32; CPP32B; procaspase3; SCA-1; Yama

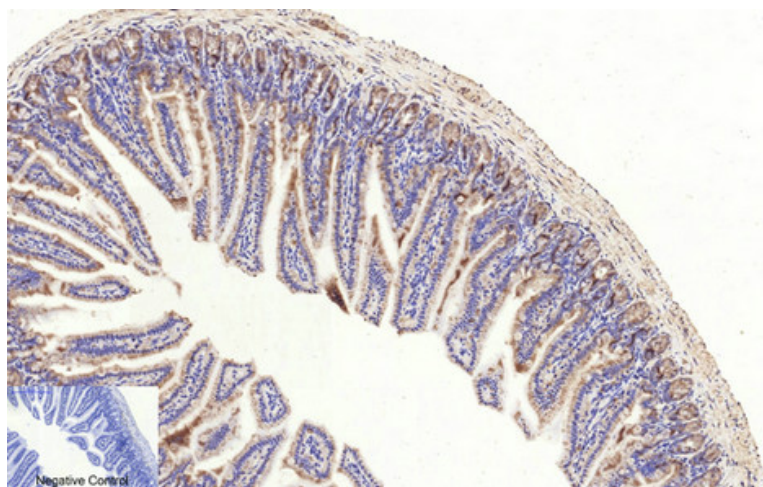


[View online »](#)

Product images:



Western blot analysis of Cleaved-Caspase3 in various lysates using Cleaved-Caspase3 p17 antibody.



Immunohistochemical analysis of Cleaved-Caspase-3 in paraffin-embedded mouse colon tissue. 1 using Cleaved-Caspase-3 p17 Rabbit pAb diluted at 1/200.