

Product datasheet for **TA383872**

Caspase 3 (CASP3) Rabbit Polyclonal Antibody

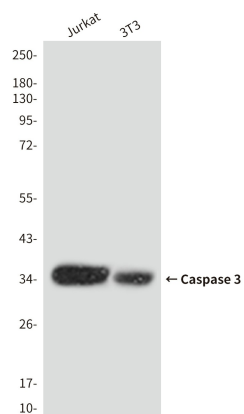
Product data:

| | |
|-------------------------|---|
| Product Type: | Primary Antibodies |
| Applications: | WB |
| Recommended Dilution: | WB: 1/1000 |
| Reactivity: | Human, Mouse |
| Host: | Rabbit |
| Isotype: | IgG |
| Clonality: | Polyclonal |
| Immunogen: | Purified recombinant human Caspase-3 protein fragments expressed in E.coli. (Cleaved) |
| Formulation: | Liquid in PBS containing 50% glycerol, 0.5% BSA and 0.03% Proclin 300, pH 7.3. |
| Concentration: | lot specific |
| Purification: | Affinity Purified |
| Conjugation: | Unconjugated |
| Storage: | Store at 4°C short term. Aliquot and store at -20°C long term. Avoid freeze/thaw cycles. |
| Stability: | 1 year |
| Predicted Protein Size: | 35kDa |
| Gene Name: | caspase 3 |
| Database Link: | Entrez Gene 836 Human P42574 |
| Background: | Swiss-Prot Acc.P42574.Involved in the activation cascade of caspases responsible for apoptosis execution. At the onset of apoptosis it proteolytically cleaves poly(ADP-ribose) polymerase (PARP) at a '216-Asp- -Gly-217' bond. Cleaves and activates sterol regulatory element binding proteins (SREBPs) between the basic helix-loop-helix leucine zipper domain and the membrane attachment domain. Cleaves and activates caspase-6, -7 and -9. Involved in the cleavage of huntingtin. Triggers cell adhesion in sympathetic neurons through RET cleavage. |
| Synonyms: | apopain; CASP-3; CPP-32; CPP32; CPP32B; procaspase3; SCA-1; Yama |



[View online »](#)

Product images:



Western blot analysis of Cleaved-Caspase3 in Jurkat and 3T3 lysates using Cleaved-Caspase3 p17 antibody.