

Product datasheet for **TA383871S**

Caspase 10 (CASP10) Rabbit Monoclonal Antibody [Clone ID: R03-2J3]

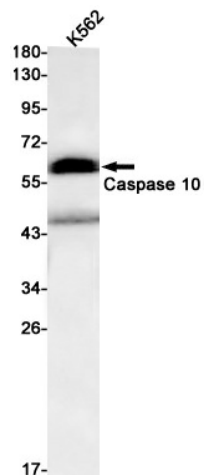
Product data:

Product Type:	Primary Antibodies
Clone Name:	R03-2J3
Applications:	IHC, IP, WB
Recommended Dilution:	WB: 1/2000 IHC: 1/20 IP: 1/20
Reactivity:	Human
Host:	Rabbit
Isotype:	IgG
Clonality:	Monoclonal
Immunogen:	Recombinant protein of human Caspase-10
Formulation:	50mM Tris-Glycine(pH 7.4), 0.15M NaCl, 40% Glycerol, 0.01% Sodium azide and 0.05% BSA
Concentration:	lot specific
Purification:	Affinity Purified
Conjugation:	Unconjugated
Storage:	Store at 4°C short term. Aliquot and store at -20°C long term. Avoid freeze/thaw cycles.
Stability:	1 year
Predicted Protein Size:	Calculated MW: 59 kDa; Observed MW: 59 kDa
Gene Name:	caspase 10
Database Link:	Entrez Gene 843 Human Q92851
Background:	Swiss-Prot Acc.Q92851.Involved in the activation cascade of caspases responsible for apoptosis execution. Recruited to both Fas- and TNFR-1 receptors in a FADD dependent manner. May participate in the granzyme B apoptotic pathways. Cleaves and activates caspase-3, -4, -6, -7, -8, and -9. Hydrolyzes the small- molecule substrates, Tyr-Val-Ala-Asp- -AMC and Asp-Glu-Val-Asp- -AMC.
Synonyms:	ALPS2; CASP-10; FLICE2; MCH4

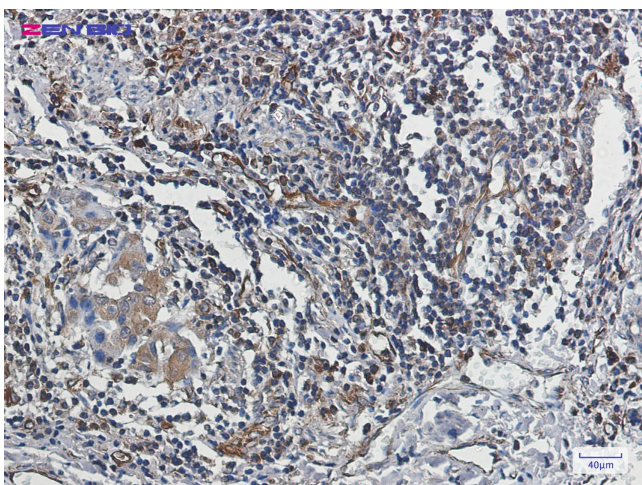


[View online »](#)

Product images:



Western blot analysis of Caspase 10 in K562 lysates using Caspase 10 antibody.



Immunohistochemistry of Caspase-10 in paraffin-embedded Human lung cancer tissue using Caspase-10 Rabbit mAb at dilution 1/20