

## Product datasheet for **TA383870S**

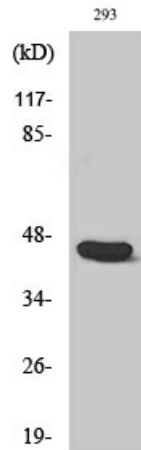
### Caspase 1 (CASP1) Rabbit Polyclonal Antibody

#### Product data:

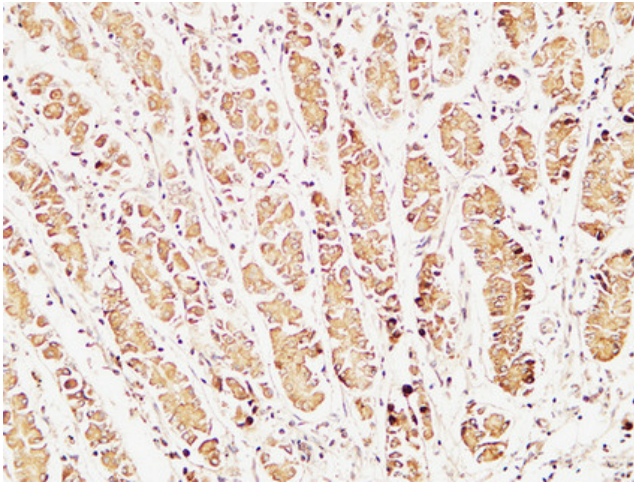
Product Type:	Primary Antibodies
Applications:	ELISA, IHC, WB
Recommended Dilution:	WB: 1/500-1/2000 IHC: 1/100-1/300 ELISA: 1/20000
Reactivity:	Human, Mouse, Rat
Host:	Rabbit
Isotype:	IgG
Clonality:	Polyclonal
Immunogen:	The antiserum was produced against synthesized peptide derived from human Caspase 1. AA range:342-391
Formulation:	Liquid in PBS containing 50% glycerol, 0.5% BSA and 0.02% sodium azide, pH 7.3.
Concentration:	lot specific
Purification:	Affinity Purified
Conjugation:	Unconjugated
Storage:	Store at 4°C short term. Aliquot and store at -20°C long term. Avoid freeze/thaw cycles.
Stability:	1 year
Predicted Protein Size:	Observed MW:45kDa
Gene Name:	caspase 1
Database Link:	<a href="#">Entrez Gene 834 Human P29466</a>
Background:	Swiss-Prot Acc.P29466.Thiol protease that cleaves IL-1 beta between an Asp and an Ala, releasing the mature cytokine which is involved in a variety of inflammatory processes. Important for defense against pathogens. Cleaves and activates sterol regulatory element binding proteins (SREBPs). Can also promote apoptosis. Upon inflammasome activation, during DNA virus infection but not RNA virus challenge, controls antiviral immunity through the cleavage of CGAS, rendering it inactive
Synonyms:	CASP-1; caspase-1; ICE; IL-1BC; IL1B-convertase; IL1BC; IL1BCE; p45



[View online »](#)

**Product images:**

Western blot analysis of Caspase 1 in various lysates using Caspase 1 antibody.



Immunohistochemical analysis of paraffin-embedded Human stomach. 1, Antibody was diluted at 1:100(4°, overnight). 2, High-pressure and temperature EDTA, pH8.0 was used for antigen retrieval. 3, Secondary antibody was diluted at 1:200 room temperature, 30min).