

Product datasheet for **TA383869S**

Caspase 1 (CASP1) Rabbit Polyclonal Antibody

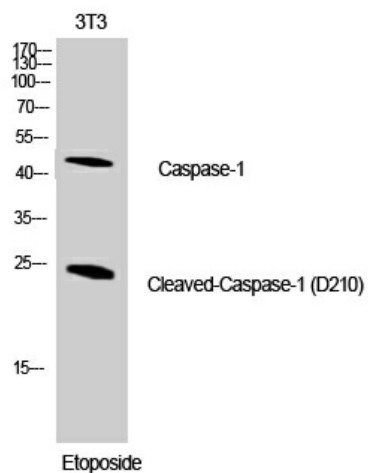
Product data:

Product Type:	Primary Antibodies
Applications:	ELISA, IF, IHC, WB
Recommended Dilution:	WB: 1/500-2000 IHC-p: 1/50-300 IF: 1/50-300
Reactivity:	Human, Mouse
Host:	Rabbit
Isotype:	IgG
Clonality:	Polyclonal
Immunogen:	The antiserum was produced against synthesized peptide derived from human IL-1 beta. AA range:161-210 (Cleaved)
Formulation:	Liquid in PBS containing 50% glycerol, 0.5% BSA and 0.02% sodium azide, pH 7.3.
Concentration:	lot specific
Purification:	Affinity Purified
Conjugation:	Unconjugated
Storage:	Store at 4°C short term. Aliquot and store at -20°C long term. Avoid freeze/thaw cycles.
Stability:	1 year
Predicted Protein Size:	Observed MW (kDa):25
Gene Name:	caspase 1
Database Link:	Entrez Gene 834 Human P29466
Background:	Swiss-Prot Acc.P29466.
Synonyms:	CASP-1; caspase-1; ICE; IL-1BC; IL1B-convertase; IL1BC; IL1BCE; p45



[View online »](#)

Product images:



Western blot analysis of Cleaved-Caspase 1 in NIH3T3 lysates using Cleaved-Caspase 1 antibody.