

Product datasheet for **TA383868**

cas9 Rabbit Polyclonal Antibody

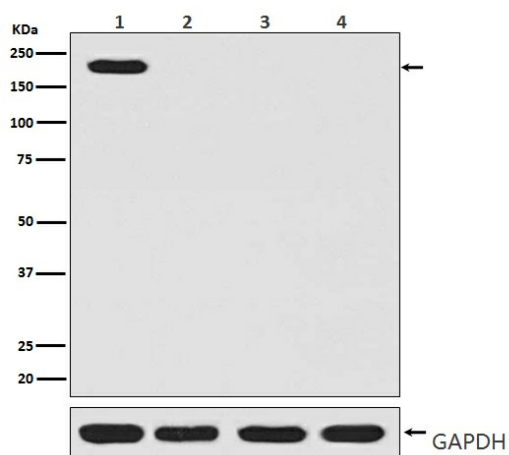
Product data:

Product Type:	Primary Antibodies
Applications:	FC, IF, IHC, WB
Recommended Dilution:	WB: 1/1000-1/5000 IHC: 1/50-1/200 ICC/IF: 1/50-1/200 FC: 1/60
Reactivity:	Staphylococcus aureus
Host:	Rabbit
Isotype:	IgG
Clonality:	Polyclonal
Immunogen:	A synthesized peptide derived from human CRISPR-Cas9 SP
Formulation:	Rabbit IgG in phosphate buffered saline , pH 7.4, 150mM NaCl, 0.02% sodium azide and 50% glycerol.
Concentration:	lot specific
Purification:	Affinity Chromatography
Conjugation:	Unconjugated
Storage:	Store at 4°C short term. Aliquot and store at -20°C long term. Avoid freeze/thaw cycles.
Stability:	1 year
Predicted Protein Size:	158kDa
Database Link:	Q99ZW2
Background:	Swiss-Prot Acc.Q99ZW2.The CRISPR associated protein 9 (Cas9) is an RNA-guided DNA nuclease and part of the Streptococcus pyogenes CRISPR antiviral immunity system that provides adaptive immunity against extra chromosomal genetic material. CRISPR/Cas9 genome editing tools have been used in many organisms, including mouse and human cells.

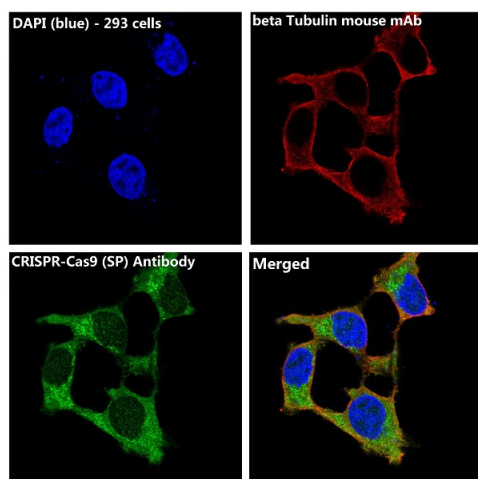


[View online »](#)

Product images:



Western blot analysis of CRISPRCas9 SP in (1) 293T lysates transfected with CRISPRCas9; (2) 293T lysates; (3) 3T3 lysates; (4) PC-12 lysates using CRISPR Cas9 SP antibody.



Immunofluorescence analysis of CRISPR Cas9 SP in 293T transfected with CRISPRSpCas9 using CRISPRCas9 SP antibody.