

Product datasheet for **TA383867S**

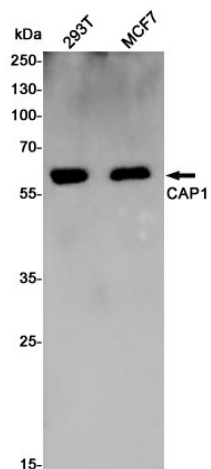
CAP1 Rabbit Polyclonal Antibody

Product data:

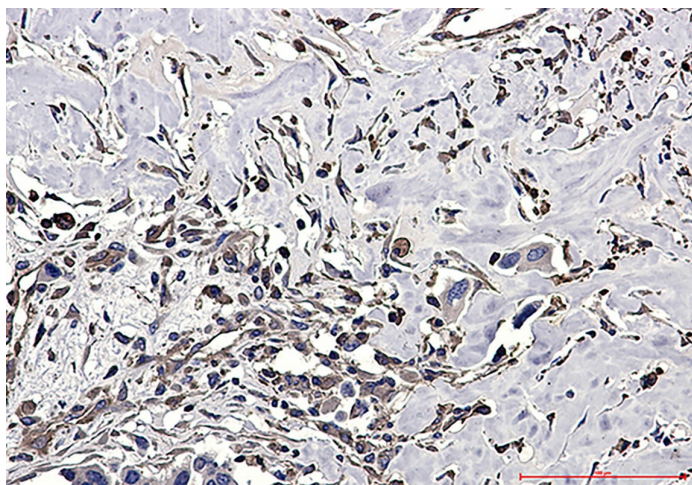
Product Type:	Primary Antibodies
Applications:	IF, IHC, IP, WB
Recommended Dilution:	WB: 1/2000-1/10000 IHC: 1/20-1/100 ICC/IF: 1/50-1/200 IP: 1/20-1/50
Reactivity:	Human
Host:	Rabbit
Isotype:	IgG
Clonality:	Polyclonal
Immunogen:	A synthetic peptide of human CAP1
Formulation:	50mM Tris-Glycine(pH 7.4), 0.15M NaCl, 40% Glycerol, 0.01% Sodium azide and 0.05% BSA
Concentration:	lot specific
Purification:	Affinity Purified
Conjugation:	Unconjugated
Storage:	Store at 4°C short term. Aliquot and store at -20°C long term. Avoid freeze/thaw cycles.
Stability:	1 year
Predicted Protein Size:	Calculated MW: 52 kDa; Observed MW: 56 kDa
Gene Name:	CAP, adenylate cyclase-associated protein 1 (yeast)
Database Link:	Entrez Gene 10487 Human Q01518
Background:	Swiss-Prot Acc.Q01518.
Synonyms:	CAP; CAP1-PEN; OTTHUMP00000004822



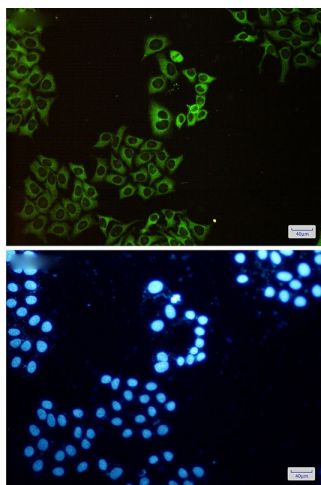
[View online »](#)

Product images:

Western blot analysis of CAP1 in 293T, MCF-7 lysates using CAP1 antibody.



Immunohistochemistry analysis of paraffin-embedded Human Cholangiocarcinoma using CAP1 antibody. High-pressure and temperature Sodium Citrate pH 6.0 was used for antigen retrieval.



Immunocytochemistry analysis of CAP1(green) in HeLa using CAP1 antibody, and DAPI(blue)