

Product datasheet for **TA383866M**

Calnexin (CANX) Rabbit Monoclonal Antibody [Clone ID: R07-2B1]

Product data:

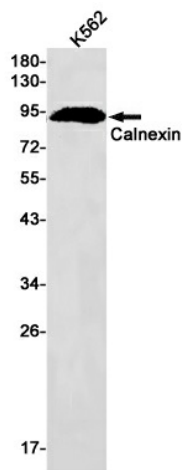
Product Type:	Primary Antibodies
Clone Name:	R07-2B1
Applications:	WB
Recommended Dilution:	WB: 1/1000
Reactivity:	Human
Host:	Rabbit
Isotype:	IgG
Clonality:	Monoclonal
Immunogen:	A synthetic peptide of human Calnexin
Formulation:	50mM Tris-Glycine(pH 7.4), 0.15M NaCl, 40% Glycerol, 0.01% Sodium azide and 0.05% BSA
Concentration:	lot specific
Purification:	Affinity Purified
Conjugation:	Unconjugated
Storage:	Store at 4°C short term. Aliquot and store at -20°C long term. Avoid freeze/thaw cycles.
Stability:	1 year
Predicted Protein Size:	Calculated MW: 68 kDa; Observed MW: 90 kDa
Gene Name:	calnexin
Database Link:	Entrez Gene 821 Human P27824
Background:	Swiss-Prot Acc.P27824.Calcium-binding protein that interacts with newly synthesized glycoproteins in the endoplasmic reticulum. It may act in assisting protein assembly and/or in the retention within the ER of unassembled protein subunits. It seems to play a major role in the quality control apparatus of the ER by the retention of incorrectly folded proteins. Associated with partial T-cell antigen receptor complexes that escape the ER of immature thymocytes, it may function as a signaling complex regulating thymocyte maturation. Additionally it may play a role in receptor-mediated endocytosis at the synapse.SitesFeature keyPosition(s)Description



[View online »](#)

Synonyms: calnexin; CNX; FLJ26570; IP90; p90

Product images:



Western blot analysis of Calnexin in K562 lysates using Calnexin antibody.