

Product datasheet for **TA383865**

Calnexin (CANX) Rabbit Polyclonal Antibody

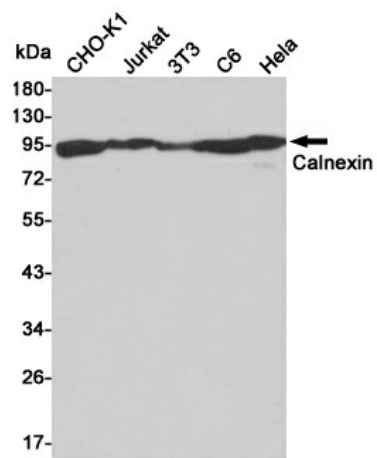
Product data:

| | |
|-------------------------|--|
| Product Type: | Primary Antibodies |
| Applications: | ELISA, IF, IHC, WB |
| Recommended Dilution: | WB: 1/500-1/2000 IHC: 1/100-1/300 IF: 1/200-1/1000 ELISA: 1/5000 |
| Reactivity: | Human, Mouse, Rat |
| Host: | Rabbit |
| Isotype: | IgG |
| Clonality: | Polyclonal |
| Immunogen: | The antiserum was produced against synthesized peptide derived from human Calnexin. AA range:543-592 |
| Formulation: | Liquid in PBS containing 50% glycerol, 0.5% BSA and 0.02% sodium azide, pH 7.3. |
| Concentration: | lot specific |
| Purification: | Affinity Purified |
| Conjugation: | Unconjugated |
| Storage: | Store at 4°C short term. Aliquot and store at -20°C long term. Avoid freeze/thaw cycles. |
| Stability: | 1 year |
| Predicted Protein Size: | Observed MW (kDa):90 |
| Gene Name: | calnexin |
| Database Link: | Entrez Gene 821 Human P27824 |
| Background: | Swiss-Prot Acc.P27824. |
| Synonyms: | calnexin; CNX; FLJ26570; IP90; p90 |



[View online »](#)

Product images:



Western blot analysis of Calnexin in CHO-K1, Jurkat, 3T3, C6 and HeLa lysates using Calnexin antibody.