

## Product datasheet for **TA383863**

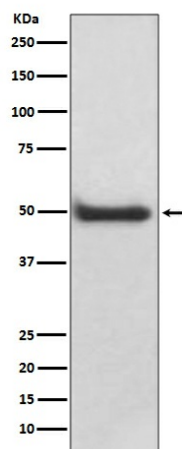
### CAMK2D Rabbit Polyclonal Antibody

#### Product data:

Product Type:	Primary Antibodies
Applications:	IHC, WB
Recommended Dilution:	WB: 1/500-1/2000 IHC: 1/50-1/200
Reactivity:	Human, Mouse, Rat
Host:	Rabbit
Isotype:	IgG
Clonality:	Polyclonal
Immunogen:	A synthesized peptide derived from human CaMKII delta
Formulation:	Rabbit IgG in phosphate buffered saline , pH 7.4, 150mM NaCl, 0.02% sodium azide and 50% glycerol.
Concentration:	lot specific
Purification:	Affinity Chromatography
Conjugation:	Unconjugated
Storage:	Store at 4°C short term. Aliquot and store at -20°C long term. Avoid freeze/thaw cycles.
Stability:	1 year
Predicted Protein Size:	50kDa
Gene Name:	calcium/calmodulin dependent protein kinase II delta
Database Link:	<a href="#">Entrez Gene 817 Human Q13557</a>
Background:	Swiss-Prot Acc.Q13557.CaM-kinase II (CAMK2) is a prominent kinase in the central nervous system that may function in long-term potentiation and neurotransmitter release.
Synonyms:	CAMKD; DKFZp686G23119; DKFZp686I2288; MGC44911; OTTHUMP00000163830



[View online »](#)

**Product images:**

Western blot analysis of CaMKII delta in A431 lysates using CaMKII delta antibody.