

Product datasheet for **TA383861**

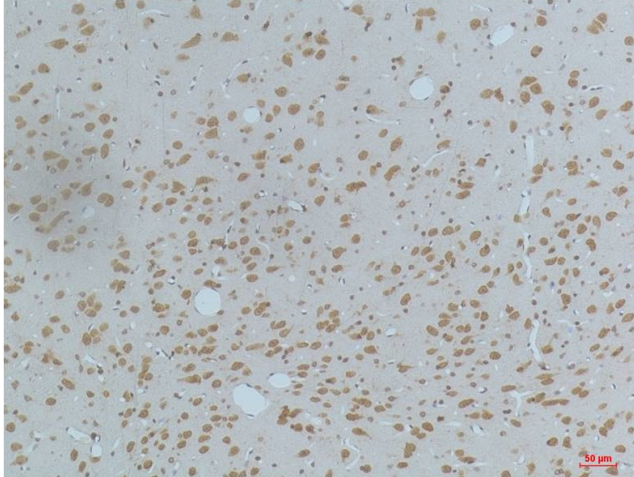
CAMK2B Mouse Monoclonal Antibody [Clone ID: 3G9-7E5-7C7]

Product data:

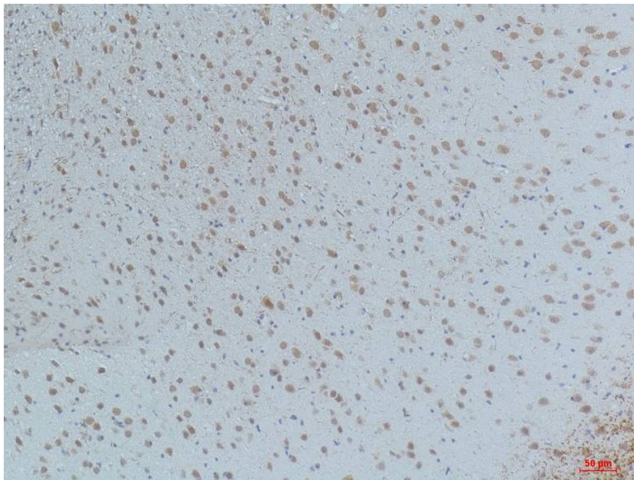
Product Type:	Primary Antibodies
Clone Name:	3G9-7E5-7C7
Applications:	IHC
Recommended Dilution:	IHC: 1/100-200
Reactivity:	Human, Rat, Mouse
Host:	Mouse
Isotype:	IgG1
Clonality:	Monoclonal
Immunogen:	Synthetic peptide conjugated to KLH. (Phosphorylated)
Formulation:	Liquid in PBS containing 50% glycerol, 0.5% BSA and 0.03% Proclin 300, pH 7.3.
Concentration:	lot specific
Purification:	Affinity Purified
Conjugation:	Unconjugated
Storage:	Store at 4°C short term. Aliquot and store at -20°C long term. Avoid freeze/thaw cycles.
Stability:	1 year
Predicted Protein Size:	50-60kDa
Gene Name:	calcium/calmodulin dependent protein kinase II beta
Database Link:	Entrez Gene 816 Human Q13554
Synonyms:	CAM2; CAMK2; CAMKB; MGC29528; OTTHUMP00000159355; OTTHUMP00000159356; OTTHUMP00000209343



[View online »](#)

Product images:

Immunohistochemistry analysis of paraffin-embedded rat Brain Tissue using Phospho-CaMKII (Thr287) (3G9) antibody. High-pressure and temperature Sodium Citrate pH 6.0 was used for antigen retrieval.



Immunohistochemical analysis of paraffin-embedded Human tonsils using Phospho-CaMKII (Thr287) (3G9) antibody. High-pressure and temperature Sodium Citrate pH 6.0 was used for antigen retrieval.