

## Product datasheet for **TA383858S**

### **CAMK2A Rabbit Polyclonal Antibody**

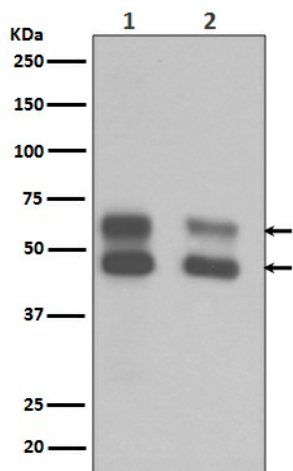
#### **Product data:**

|                                |   |
|--------------------------------|---|
| <b>Product Type:</b>           | Primary Antibodies  |
| <b>Applications:</b>           | IF, IHC, WB   |
| <b>Recommended Dilution:</b>   | WB: 1/500-1/2000<br>IHC: 1/50-1/200<br>ICC/IF: 1/50-1/200   |
| <b>Reactivity:</b>             | Human, Mouse, Rat   |
| <b>Host:</b>                   | Rabbit  |
| <b>Isotype:</b>                | IgG   |
| <b>Clonality:</b>              | Polyclonal  |
| <b>Immunogen:</b>              | A synthesized peptide derived from human CaMKII   |
| <b>Formulation:</b>            | Rabbit IgG in phosphate buffered saline , pH 7.4, 150mM NaCl, 0.02% sodium azide and 50% glycerol.  |
| <b>Concentration:</b>          | lot specific  |
| <b>Purification:</b>           | Affinity Chromatography   |
| <b>Conjugation:</b>            | Unconjugated  |
| <b>Storage:</b>                | Store at 4°C short term. Aliquot and store at -20°C long term. Avoid freeze/thaw cycles.  |
| <b>Stability:</b>              | 1 year  |
| <b>Predicted Protein Size:</b> | 45,60 kDa   |
| <b>Gene Name:</b>              | calcium/calmodulin dependent protein kinase II alpha  |
| <b>Database Link:</b>          | <a href="#">Entrez Gene 815 Human Q13554</a>  |
| <b>Background:</b>             | Swiss-Prot Acc.Q13554.CaM-kinase II (CAMK2) is a prominent kinase in the central nervous system that may function in long-term potentiation and neurotransmitter release. Member of the NMDAR signaling complex in excitatory synapses it may regulate NMDAR-dependent potentiation of the AMPAR and synaptic plasticity. |
| <b>Synonyms:</b>               | CAMKA; CaMKIIalpha; KIAA0968  |

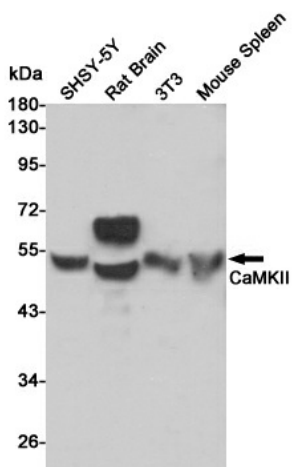


[View online »](#)

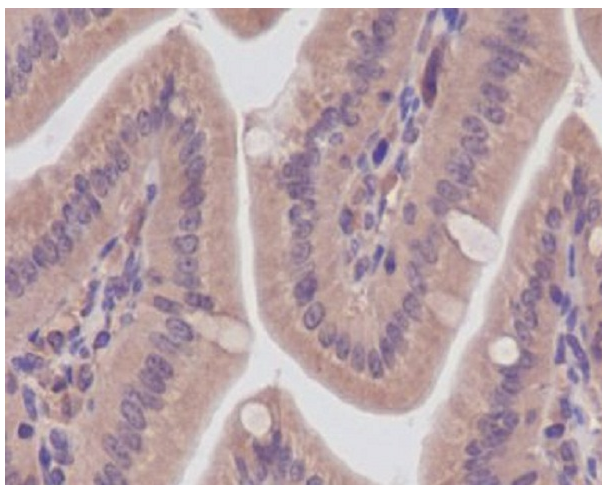
Product images:



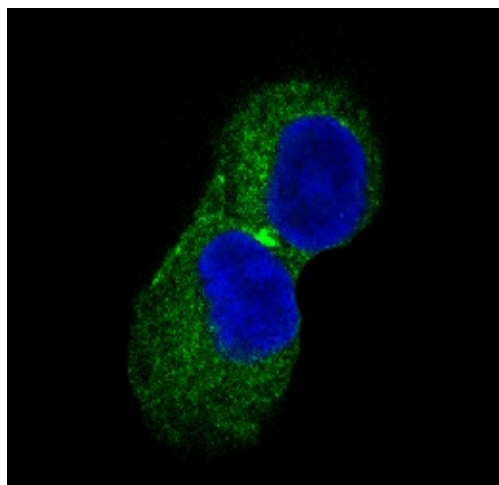
Western blot analysis of CaMKII in (1)mouse brain lysates ;(2)Rat brain lysates using CaMKII antibody.



Western blot analysis of CaMKII in SH-SY5Y, rat Brain, 3T3 and mouse Spleen lysates using CaMKII antibody.



Immunohistochemistry analysis of paraffin-embedded mouse colon, using CaMKII antibody. High-pressure and temperature Sodium Citrate pH 6.0 was used for antigen retrieval.



Immunofluorescent analysis of CaMKII in PC-12 using CaMKII antibody.