

## Product datasheet for **TA383858M**

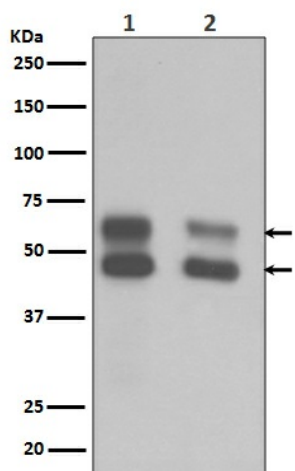
### **CAMK2A Rabbit Polyclonal Antibody**

#### **Product data:**

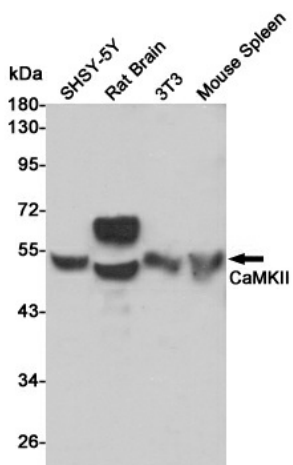
Product Type:	Primary Antibodies
Applications:	IF, IHC, WB
Recommended Dilution:	WB: 1/500-1/2000 IHC: 1/50-1/200 ICC/IF: 1/50-1/200
Reactivity:	Human, Mouse, Rat
Host:	Rabbit
Isotype:	IgG
Clonality:	Polyclonal
Immunogen:	A synthesized peptide derived from human CaMKII
Formulation:	Rabbit IgG in phosphate buffered saline , pH 7.4, 150mM NaCl, 0.02% sodium azide and 50% glycerol.
Concentration:	lot specific
Purification:	Affinity Chromatography
Conjugation:	Unconjugated
Storage:	Store at 4°C short term. Aliquot and store at -20°C long term. Avoid freeze/thaw cycles.
Stability:	1 year
Predicted Protein Size:	45,60 kDa
Gene Name:	calcium/calmodulin dependent protein kinase II alpha
Database Link:	<a href="#">Entrez Gene 815 Human Q13554</a>
Background:	Swiss-Prot Acc.Q13554.CaM-kinase II (CAMK2) is a prominent kinase in the central nervous system that may function in long-term potentiation and neurotransmitter release. Member of the NMDAR signaling complex in excitatory synapses it may regulate NMDAR-dependent potentiation of the AMPAR and synaptic plasticity.
Synonyms:	CAMKA; CaMKIINalpha; KIAA0968



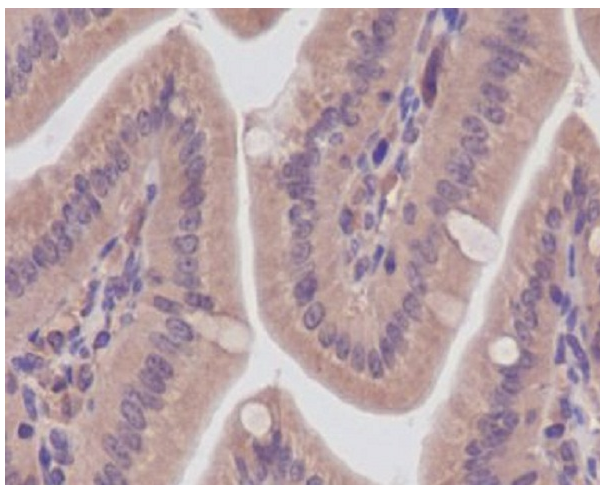
[View online »](#)

**Product images:**


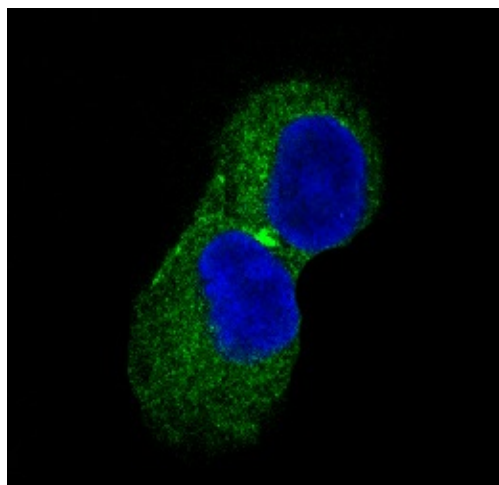
Western blot analysis of CaMKII in (1)mouse brain lysates ;(2)Rat brain lysates using CaMKII antibody.



Western blot analysis of CaMKII in SH-SY5Y, rat Brain, 3T3 and mouse Spleen lysates using CaMKII antibody.



Immunohistochemistry analysis of paraffin-embedded mouse colon, using CaMKII antibody. High-pressure and temperature Sodium Citrate pH 6.0 was used for antigen retrieval.



Immunofluorescent analysis of CaMKII in PC-12 using CaMKII antibody.