

## Product datasheet for **TA383857**

### **CAMK2A Rabbit Polyclonal Antibody**

#### **Product data:**

<b>Product Type:</b>	Primary Antibodies
<b>Applications:</b>	ELISA, IF, IHC, WB
<b>Recommended Dilution:</b>	WB: 1/500-1/2000 IHC: 1/100-1/300 IF: 1/200-1/1000 ELISA: 1/10000
<b>Reactivity:</b>	Human, Mouse, Rat
<b>Host:</b>	Rabbit
<b>Isotype:</b>	IgG
<b>Clonality:</b>	Polyclonal
<b>Immunogen:</b>	The antiserum was produced against synthesized peptide derived from human CaMK2 alpha/delta. AA range:256-305
<b>Formulation:</b>	Liquid in PBS containing 50% glycerol, 0.5% BSA and 0.02% sodium azide, pH 7.3.
<b>Concentration:</b>	lot specific
<b>Purification:</b>	Affinity Chromatography
<b>Conjugation:</b>	Unconjugated
<b>Storage:</b>	Store at 4°C short term. Aliquot and store at -20°C long term. Avoid freeze/thaw cycles.
<b>Stability:</b>	1 year
<b>Predicted Protein Size:</b>	Observed MW (kDa):54
<b>Gene Name:</b>	calcium/calmodulin dependent protein kinase II alpha
<b>Database Link:</b>	<a href="#">Entrez Gene 815 Human</a> <a href="#">Q9UQM7</a>



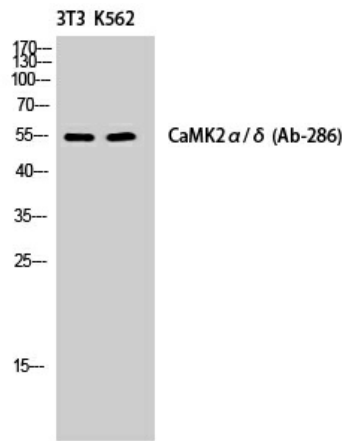
[View online »](#)

**Background:**

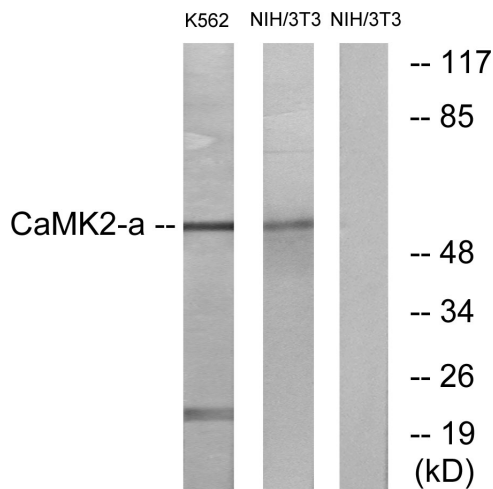
Swiss-Prot Acc.Q9UQM7/Q13557. The product of CAMK2A (calcium/calmodulin dependent protein kinase II alpha) belongs to the serine/threonine protein kinases family, and to the Ca(2+)/calmodulin-dependent protein kinases subfamily. Calcium signaling is crucial for several aspects of plasticity at glutamatergic synapses. This calcium calmodulin-dependent protein kinase is composed of four different chains: alpha, beta, gamma, and delta. The alpha chain encoded by this gene is required for hippocampal long-term potentiation (LTP) and spatial learning. In addition to its calcium-calmodulin (CaM)-dependent activity, this protein can undergo autophosphorylation, resulting in CaM-independent activity. Two transcript variants encoding distinct isoforms have been identified for CAMK2A.

**Synonyms:**

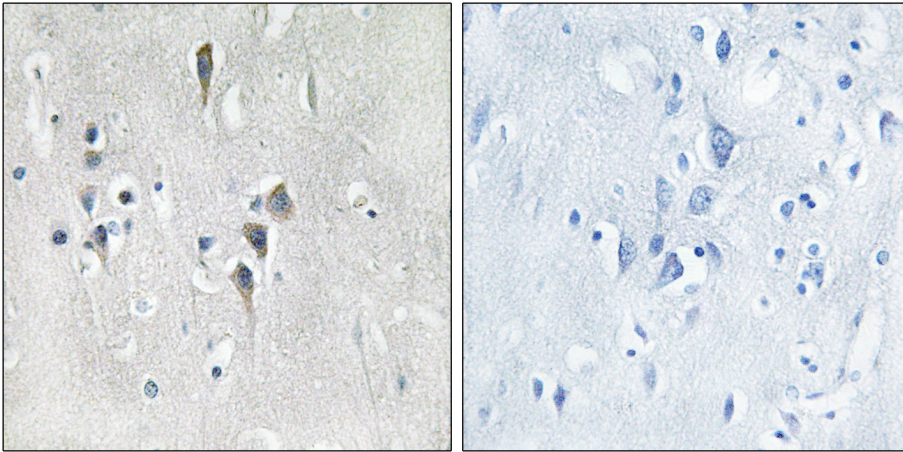
CAMKA; CaMKIINalpha; KIAA0968

**Product images:**


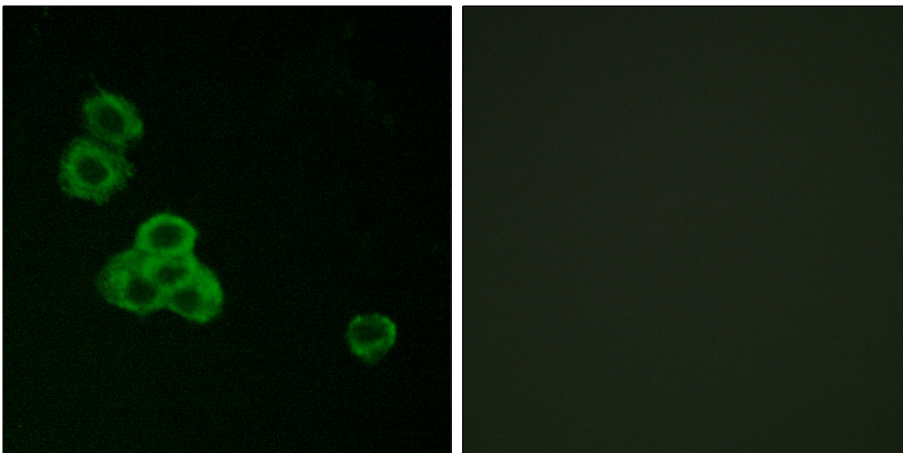
Western blot analysis of CaMKII alpha/delta in NIH3T3/K562 lysates using CaMKII alpha/delta antibody.



Western blot analysis of CaMKII alpha/delta in NIH/3T3 and K562 lysates using CaMKII alpha/delta antibody. The lane on the right is blocked with the synthesized peptide.



Immunohistochemistry analysis of paraffin-embedded Human brain tissue using CaMK2 alpha/delta antibody. High-pressure and temperature Sodium Citrate pH 6.0 was used for antigen retrieval. Sample with blocking peptide on the right.



Immunofluorescence analysis of CaMKII alpha/delta in MCF-7 using CaMK2 alpha/delta antibody. The picture on the right is blocked using the synthesized peptide.