

Product datasheet for **TA383856M**

CAMK2A Rabbit Monoclonal Antibody [Clone ID: R09-9E5]

Product data:

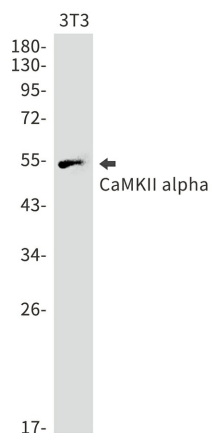
Product Type:	Primary Antibodies
Clone Name:	R09-9E5
Applications:	WB
Recommended Dilution:	WB: 1/1000-1/2000
Reactivity:	Human, Mouse, Rat
Host:	Rabbit
Isotype:	IgG
Clonality:	Monoclonal
Immunogen:	A synthetic peptide of human CaMKII
Formulation:	50mM Tris-Glycine(pH 7.4), 0.15M NaCl, 40% Glycerol, 0.01% Sodium azide and 0.05% BSA
Concentration:	lot specific
Purification:	Affinity Purified
Conjugation:	Unconjugated
Storage:	Store at 4°C short term. Aliquot and store at -20°C long term. Avoid freeze/thaw cycles.
Stability:	1 year
Predicted Protein Size:	Calculated MW: 54 kDa; Observed MW: 54 kDa
Gene Name:	calcium/calmodulin dependent protein kinase II alpha
Database Link:	Entrez Gene 815 Human Q9UQM7
Background:	Swiss-Prot Acc.Q9UQM7.Calcium/calmodulin-dependent protein kinase that functions autonomously after Ca ²⁺ /calmodulin-binding and autophosphorylation, and is involved in synaptic plasticity, neurotransmitter release and long-term potentiation. Member of the NMDAR signaling complex in excitatory synapses, it regulates NMDAR-dependent potentiation of the AMPAR and therefore excitatory synaptic transmission . Regulates dendritic spine development (PubMed:28130356). Also regulates the migration of developing neurons (PubMed:29100089). Phosphorylates the transcription factor FOXO3 to activate its transcriptional activity (PubMed:23805378).



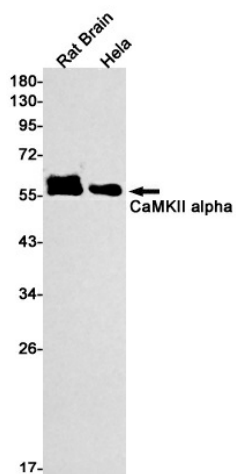
[View online »](#)

Synonyms: CAMKA; CaMKIINalpha; KIAA0968

Product images:



Western blot analysis of CaMKII alpha in 3T3 lysates using CaMKII alpha antibody.



Western blot analysis of CaMKII alpha in rat Brain, HeLa lysates using CaMKII alpha antibody.