

Product datasheet for **TA383855**

CAMK2A Rabbit Polyclonal Antibody

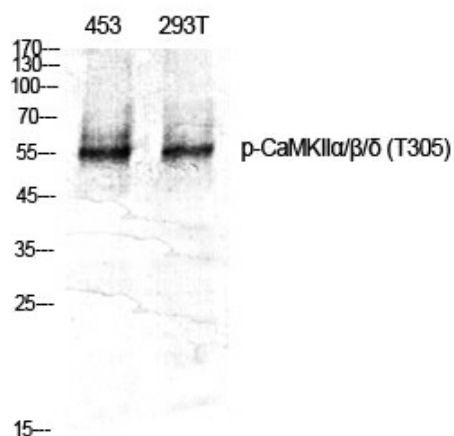
Product data:

Product Type:	Primary Antibodies
Applications:	ELISA, IHC, WB
Recommended Dilution:	WB: 1/500-1/2000 IHC: 1/100-1/300 ELISA: 1/5000
Reactivity:	Human, Mouse, Rat
Host:	Rabbit
Isotype:	IgG
Clonality:	Polyclonal
Immunogen:	The antiserum was produced against synthesized peptide derived from human CaMK2 alpha/beta/delta around the phosphorylation site of Thr305. AA range:271-320 (Phosphorylated)
Formulation:	Liquid in PBS containing 50% glycerol, 0.5% BSA and 0.02% sodium azide, pH 7.3.
Concentration:	lot specific
Purification:	Affinity Purified
Conjugation:	Unconjugated
Storage:	Store at 4°C short term. Aliquot and store at -20°C long term. Avoid freeze/thaw cycles.
Stability:	1 year
Predicted Protein Size:	Observed MW (kDa):54
Gene Name:	calcium/calmodulin dependent protein kinase II alpha
Database Link:	Entrez Gene 815 Human Q9UQM7
Background:	Swiss-Prot Acc.Q9UQM7/Q13554/Q13557.
Synonyms:	CAMKA; CaMKIIalpha; KIAA0968

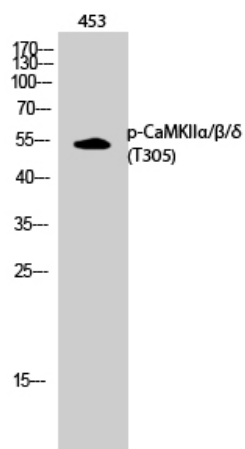


[View online »](#)

Product images:



Western blot analysis of Phospho-CaMKII (Thr305) in various lysates using Phospho-CaMKII (Thr305) antibody.



Western blot analysis of Phospho-CaMKII (Thr305) in 453 lysates using Phospho-CaMKII $\alpha/\beta/\delta$ (T305) antibody.