

Product datasheet for **TA383854M**

Caldesmon (CALD1) Rabbit Monoclonal Antibody [Clone ID: R05-3D2]

Product data:

Product Type:	Primary Antibodies
Clone Name:	R05-3D2
Applications:	IHC, IP, WB
Recommended Dilution:	WB: 1/2000-1/10000 IHC: 1/20 IP: 1/20
Reactivity:	Human, Mouse, Rat
Host:	Rabbit
Isotype:	IgG
Clonality:	Monoclonal
Immunogen:	A synthetic peptide of human Caldesmon
Formulation:	50mM Tris-Glycine(pH 7.4), 0.15M NaCl, 40% Glycerol, 0.01% Sodium azide and 0.05% BSA
Concentration:	lot specific
Purification:	Affinity Purified
Conjugation:	Unconjugated
Storage:	Store at 4°C short term. Aliquot and store at -20°C long term. Avoid freeze/thaw cycles.
Stability:	1 year
Predicted Protein Size:	Calculated MW: 93 kDa; Observed MW: 70-80 kDa
Gene Name:	caldesmon 1
Database Link:	Entrez Gene 800 Human Q05682



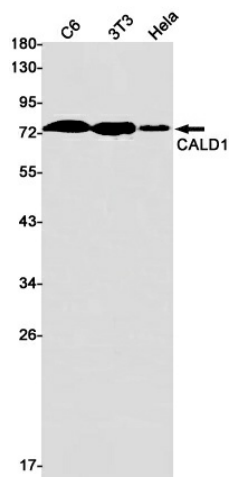
[View online »](#)

Background:

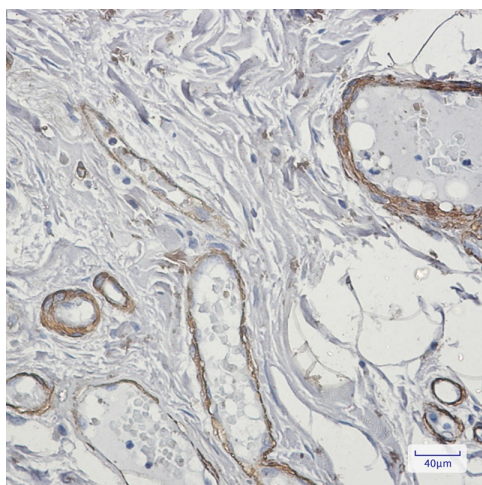
Swiss-Prot Acc.Q05682.Actin- and myosin-binding protein implicated in the regulation of actomyosin interactions in smooth muscle and nonmuscle cells (could act as a bridge between myosin and actin filaments). Stimulates actin binding of tropomyosin which increases the stabilization of actin filament structure. In muscle tissues, inhibits the actomyosin ATPase by binding to F-actin. This inhibition is attenuated by calcium-calmodulin and is potentiated by tropomyosin. Interacts with actin, myosin, two molecules of tropomyosin and with calmodulin. Also play an essential role during cellular mitosis and receptor capping. Involved in Schwann cell migration during peripheral nerve regeneration .

Synonyms:

CAD; CDM; H-CAD; HCAD; L-CAD; LCAD; MGC21352; NAG22; OTTHUMP00000207949; OTTHUMP00000207954

Product images:


Western blot analysis of CALD1 in C6, 3T3, HeLa lysates using Caldesmon antibody.



Immunohistochemistry analysis of paraffin-embedded Human colon cancer using Caldesmon antibody. High-pressure and temperature Sodium Citrate pH 6.0 was used for antigen retrieval.