

Product datasheet for **TA383851M**

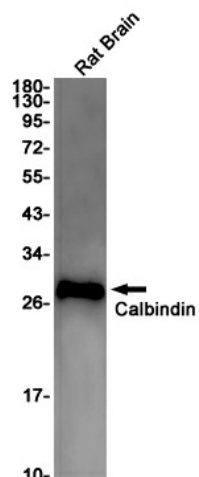
Calb1 Rabbit Monoclonal Antibody [Clone ID: R06-4D6]

Product data:

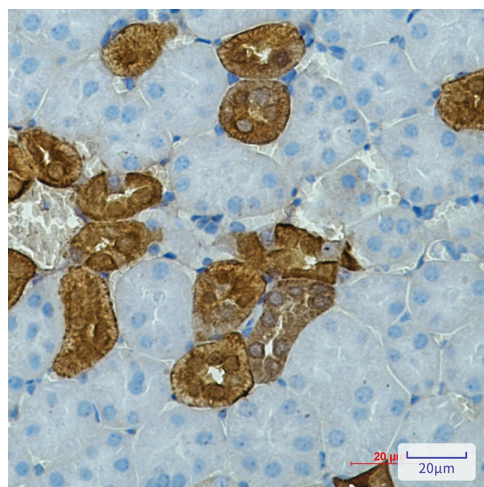
Product Type:	Primary Antibodies
Clone Name:	R06-4D6
Applications:	IHC, IP, WB
Recommended Dilution:	WB: 1/1000 IHC: 1/200 IP: 1/20
Reactivity:	Human, Mouse, Rat
Host:	Rabbit
Isotype:	IgG
Clonality:	Monoclonal
Immunogen:	Recombinant protein of mouse Calbindin
Formulation:	50mM Tris-Glycine(pH 7.4), 0.15M NaCl, 40% Glycerol, 0.01% Sodium azide and 0.05% BSA
Concentration:	lot specific
Purification:	Affinity Purified
Conjugation:	Unconjugated
Storage:	Store at 4°C short term. Aliquot and store at -20°C long term. Avoid freeze/thaw cycles.
Stability:	1 year
Predicted Protein Size:	Calculated MW: 30 kDa; Observed MW: 30 kDa
Gene Name:	calbindin 1
Database Link:	Entrez Gene 12307 Mouse P12658
Background:	Swiss-Prot Acc.P12658.Calbindin
Synonyms:	CAB27; CALB; D-28K


[View online »](#)

Product images:



Western blot analysis of Calbindin in rat Brain lysates using Calbindin antibody.



Immunohistochemistry analysis of paraffin-embedded mouse kidney using Calbindin antibody. High-pressure and temperature Sodium Citrate pH 6.0 was used for antigen retrieval.