

Product datasheet for **TA383850M**

Calbindin (CALB1) Rabbit Polyclonal Antibody

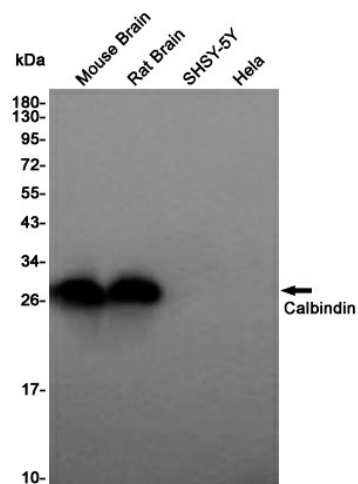
Product data:

Product Type:	Primary Antibodies
Applications:	IHC, WB
Recommended Dilution:	WB: 1/1000-1/5000 IHC: 1/20-1/100
Reactivity:	Human, Mouse, Rat
Host:	Rabbit
Isotype:	IgG
Clonality:	Polyclonal
Immunogen:	A synthetic peptide of human Calbindin
Formulation:	50mM Tris-Glycine(pH 7.4), 0.15M NaCl, 40% Glycerol, 0.01% Sodium azide and 0.05% BSA
Concentration:	lot specific
Purification:	Affinity Purified
Conjugation:	Unconjugated
Storage:	Store at 4°C short term. Aliquot and store at -20°C long term. Avoid freeze/thaw cycles.
Stability:	1 year
Predicted Protein Size:	Calculated MW: 30 kDa; Observed MW: 30 kDa
Gene Name:	calbindin 1
Database Link:	Entrez Gene 793 Human P05937
Background:	Swiss-Prot Acc.P05937.
Synonyms:	CAB27; CALB; D-28K

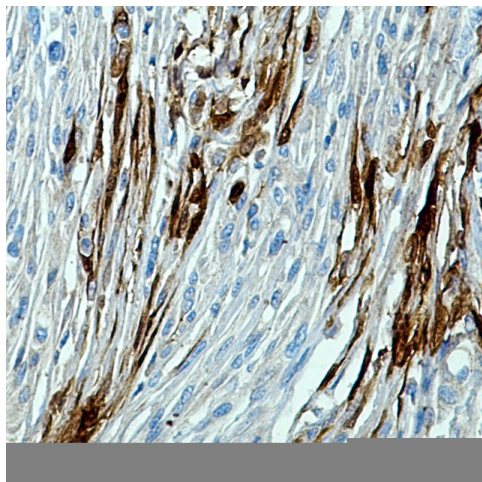


[View online »](#)

Product images:



Western blot analysis of Calbindin in mouse Brain, rat Brain, SH-SY5Y, HeLa lysates using Calbindin antibody.



Immunohistochemistry analysis of paraffin-embedded Human brain using Calbindin antibody. High-pressure and temperature Sodium Citrate pH 6.0 was used for antigen retrieval.