

## Product datasheet for **TA383842**

### Complement C7 (C7) Rabbit Polyclonal Antibody

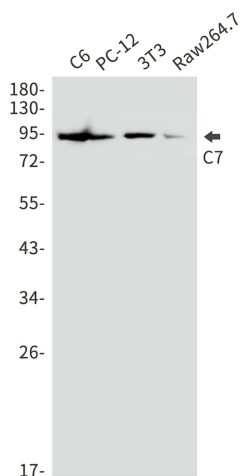
#### Product data:

Product Type:	Primary Antibodies
Applications:	FC, IHC, IP, WB
Recommended Dilution:	WB: 1/1000-1/5000 IHC: 1/50-1/200 FC: 1/20 IP: 1/20-1/100
Reactivity:	Human, Mouse, Rat
Host:	Rabbit
Isotype:	IgG
Clonality:	Polyclonal
Immunogen:	A synthetic peptide of human C7
Formulation:	50mM Tris-Glycine(pH 7.4), 0.15M NaCl, 40% Glycerol, 0.01% Sodium azide and 0.05% BSA
Concentration:	lot specific
Purification:	Affinity Purified
Conjugation:	Unconjugated
Storage:	Store at 4°C short term. Aliquot and store at -20°C long term. Avoid freeze/thaw cycles.
Stability:	1 year
Predicted Protein Size:	Calculated MW: 94 kDa; Observed MW: 94 kDa
Gene Name:	complement component 7
Database Link:	<a href="#">Entrez Gene 730 Human P10643</a>
Background:	Swiss-Prot Acc.P10643.
Synonyms:	C7

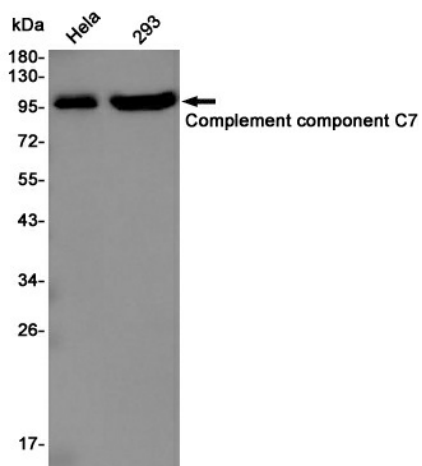


[View online »](#)

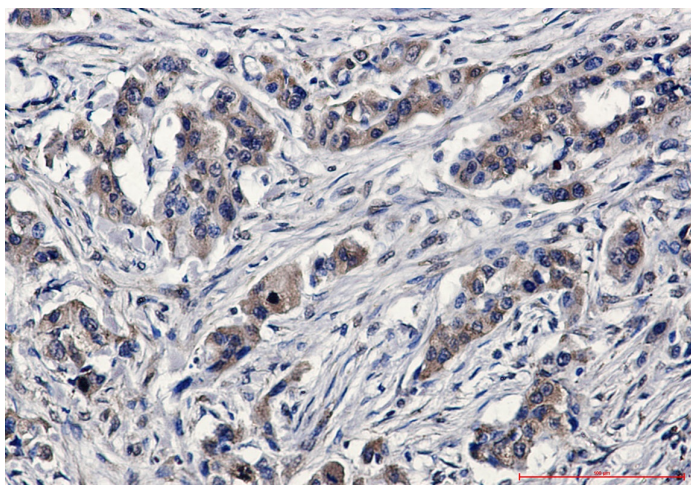
Product images:



Western blot analysis of C7 in C6, PC-12, 3T3, Raw264.7 lysates using C7 antibody.



Western blot analysis of C7 in HeLa, 293 lysates using C7 antibody.



Immunohistochemistry analysis of paraffin-embedded Human lung cancer using C7 antibody. High-pressure and temperature Sodium Citrate pH 6.0 was used for antigen retrieval.