

## Product datasheet for TA383839M

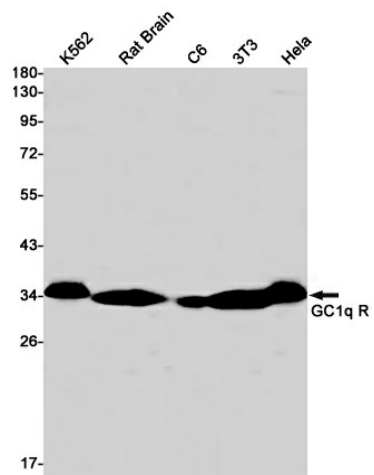
### GC1q R (C1QBP) Rabbit Monoclonal Antibody [Clone ID: R08-5F6]

#### Product data:

Product Type:	Primary Antibodies
Clone Name:	R08-5F6
Applications:	IP, WB
Recommended Dilution:	WB: 1/1000-1/5000 IP: 1/20
Reactivity:	Human, Mouse, Rat
Host:	Rabbit
Isotype:	IgG
Clonality:	Monoclonal
Immunogen:	A synthetic peptide of human C1QBP
Formulation:	50mM Tris-Glycine(pH 7.4), 0.15M NaCl, 40% Glycerol, 0.01% Sodium azide and 0.05% BSA
Concentration:	lot specific
Purification:	Affinity Purified
Conjugation:	Unconjugated
Storage:	Store at 4°C short term. Aliquot and store at -20°C long term. Avoid freeze/thaw cycles.
Stability:	1 year
Predicted Protein Size:	Calculated MW: 31 kDa; Observed MW: 31 kDa
Gene Name:	complement component 1, q subcomponent binding protein
Database Link:	<a href="#">Entrez Gene 708 Human Q07021</a>
Background:	Swiss-Prot Acc.Q07021.Is believed to be a multifunctional and multicompartmental protein involved in inflammation and infection processes, ribosome biogenesis, protein synthesis in mitochondria, regulation of apoptosis, transcriptional regulation and pre-mRNA splicing. At the cell surface is thought to act as an endothelial receptor for plasma proteins of the complement and kallikrein-kinin cascades. Putative receptor for C1q; specifically binds to the globular
Synonyms:	gC1Q-R; GC1QBP; gC1qR; HABP1; p32; p33; SF2p32


[View online »](#)

## Product images:



Western blot analysis of GC1q R in K562, rat Brain, C6, 3T3, HeLa lysates using GC1q R antibody.