

Product datasheet for **TA383838**

GC1q R (C1QBP) Rabbit Polyclonal Antibody

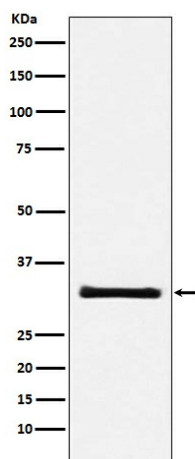
Product data:

Product Type:	Primary Antibodies
Applications:	IHC, WB
Recommended Dilution:	WB: 1/500-1/2000 IHC: 1/50-1/200
Reactivity:	Human, Mouse, Rat
Host:	Rabbit
Isotype:	IgG
Clonality:	Polyclonal
Immunogen:	A synthesized peptide derived from human GC1q R
Formulation:	Rabbit IgG in phosphate buffered saline , pH 7.4, 150mM NaCl, 0.02% sodium azide and 50% glycerol.
Concentration:	lot specific
Purification:	Affinity Chromatography
Conjugation:	Unconjugated
Storage:	Store at 4°C short term. Aliquot and store at -20°C long term. Avoid freeze/thaw cycles.
Stability:	1 year
Predicted Protein Size:	31kDa
Gene Name:	complement component 1, q subcomponent binding protein
Database Link:	Entrez Gene 708 Human Q07021
Background:	Swiss-Prot Acc.Q07021.Binds to the globular
Synonyms:	gC1Q-R; GC1QBP; gC1qR; HABP1; p32; p33; SF2p32



[View online »](#)

Product images:



Western blot analysis of GC1q R in HeLa lysates using GC1q R antibody.