

## Product datasheet for **TA383837**

### **BubR1 (BUB1B) Rabbit Polyclonal Antibody**

#### **Product data:**

|                         |  |
|-------------------------|--|
| Product Type:           | Primary Antibodies   |
| Applications:           | FC, IHC, IP, WB  |
| Recommended Dilution:   | WB: 1/1000-1/5000<br>IHC: 1/50-1/200<br>IP: 1/30<br>FC: 1/50                                       |
| Reactivity:             | Human, Mouse, Rat  |
| Host:                   | Rabbit   |
| Isotype:                | IgG  |
| Clonality:              | Polyclonal   |
| Immunogen:              | A synthesized peptide derived from human BubR1   |
| Formulation:            | Rabbit IgG in phosphate buffered saline , pH 7.4, 150mM NaCl, 0.02% sodium azide and 50% glycerol. |
| Concentration:          | lot specific   |
| Purification:           | Affinity Chromatography  |
| Conjugation:            | Unconjugated   |
| Storage:                | Store at 4°C short term. Aliquot and store at -20°C long term. Avoid freeze/thaw cycles.           |
| Stability:              | 1 year   |
| Predicted Protein Size: | 120kDa   |
| Gene Name:              | BUB1 mitotic checkpoint serine/threonine kinase B  |
| Database Link:          | <a href="#">Entrez Gene 701 Human</a><br><a href="#">O60566</a>                                    |



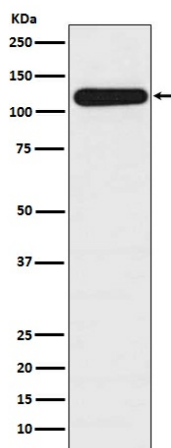
[View online »](#)

**Background:**

Swiss-Prot Acc.O60566.Essential component of the mitotic checkpoint. Required for normal mitosis progression. The mitotic checkpoint delays anaphase until all chromosomes are properly attached to the mitotic spindle. One of its checkpoint functions is to inhibit the activity of the anaphase-promoting complex/cyclosome (APC/C) by blocking the binding of CDC20 to APC/C, independently of its kinase activity. The other is to monitor kinetochore activities that depend on the kinetochore motor CENPE. Required for kinetochore localization of CENPE.

**Synonyms:**

Bub1A; BUB1beta; BUBR1; hBUBR1; MAD3L; SSK1

**Product images:**

Western blot analysis of BubR1 in HepG2 lysates using BUBR1 antibody.