

## Product datasheet for **TA383834**

### **BTF3 Rabbit Monoclonal Antibody [Clone ID: R01-2B7]**

#### **Product data:**

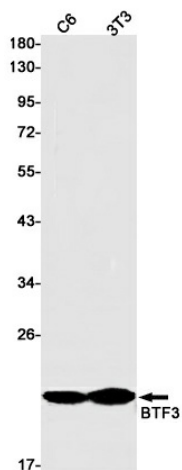
<b>Product Type:</b>	Primary Antibodies
<b>Clone Name:</b>	R01-2B7
<b>Applications:</b>	IHC, IP, WB
<b>Recommended Dilution:</b>	WB: 1/1000 IHC: 1/50 IP: 1/20
<b>Reactivity:</b>	Human, Mouse, Rat
<b>Host:</b>	Rabbit
<b>Isotype:</b>	IgG
<b>Clonality:</b>	Monoclonal
<b>Immunogen:</b>	Recombinant protein of human BTF3
<b>Formulation:</b>	50mM Tris-Glycine(pH 7.4), 0.15M NaCl, 40% Glycerol, 0.01% Sodium azide and 0.05% BSA
<b>Concentration:</b>	lot specific
<b>Purification:</b>	Affinity Purified
<b>Conjugation:</b>	Unconjugated
<b>Storage:</b>	Store at 4°C short term. Aliquot and store at -20°C long term. Avoid freeze/thaw cycles.
<b>Stability:</b>	1 year
<b>Predicted Protein Size:</b>	Calculated MW: 22 kDa; Observed MW: 22 kDa
<b>Gene Name:</b>	basic transcription factor 3
<b>Database Link:</b>	<a href="#">Entrez Gene 689 Human P20290</a>
<b>Background:</b>	Swiss-Prot Acc.P20290.When associated with NACA, prevents inappropriate targeting of non-secretory polypeptides to the endoplasmic reticulum (ER). Binds to nascent polypeptide chains as they emerge from the ribosome and blocks their interaction with the signal recognition particle (SRP), which normally targets nascent secretory peptides to the ER. BTF3 is also a general transcription factor that can form a stable complex with RNA polymerase II. Required for the initiation of transcription.



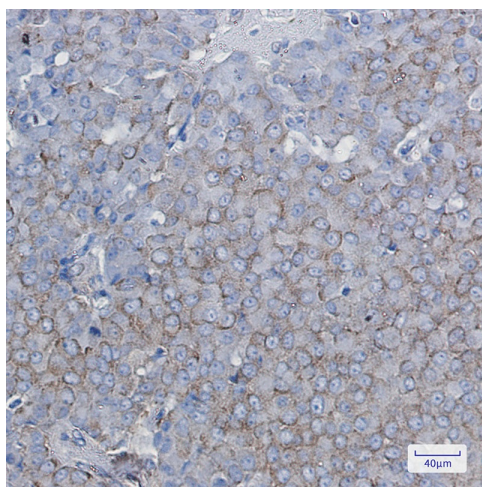
[View online »](#)

Synonyms: BETA-NAC; BTF3a; BTF3b; NACB

### Product images:



Western blot analysis of BTF3 in C6, 3T3 lysates using BTF3 antibody.



Immunohistochemistry analysis of paraffin-embedded Human breast cancer using BTF3 antibody. High-pressure and temperature Sodium Citrate pH 6.0 was used for antigen retrieval.