

## Product datasheet for **TA383833S**

### Bsg Rabbit Polyclonal Antibody

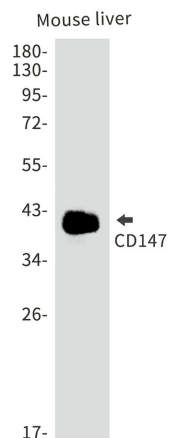
#### Product data:

Product Type:	Primary Antibodies
Applications:	FC, IHC, IP, WB
Recommended Dilution:	WB: 1/1000 IHC: 1/20-1/500 FC: 1/50 IP: 1/20
Reactivity:	Human, Mouse
Host:	Rabbit
Isotype:	IgG
Clonality:	Polyclonal
Immunogen:	Recombinant protein of mouse CD147
Formulation:	50mM Tris-Glycine(pH 7.4), 0.15M NaCl, 40% Glycerol, 0.01% Sodium azide and 0.05% BSA
Concentration:	lot specific
Purification:	Affinity Purified
Conjugation:	Unconjugated
Storage:	Store at 4°C short term. Aliquot and store at -20°C long term. Avoid freeze/thaw cycles.
Stability:	1 year
Predicted Protein Size:	Calculated MW: 42 kDa; Observed MW: 38-58 kDa
Gene Name:	basigin
Database Link:	<a href="#">Entrez Gene 12215 Mouse P18572</a>
Synonyms:	5F7; basigin; CD147; EMMPRIN; M6; OK; TCSF

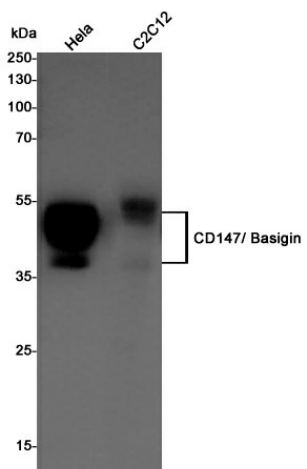


[View online »](#)

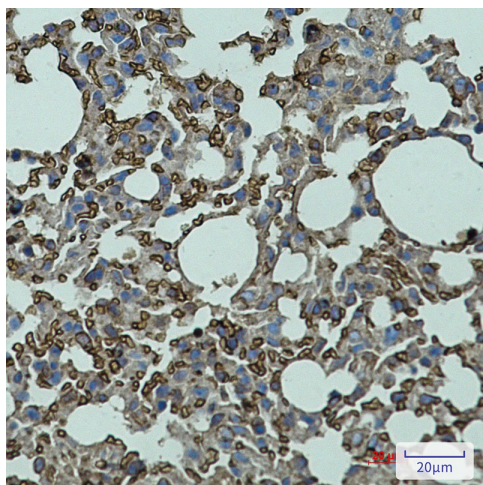
Product images:



Western blot analysis of CD147 in mouse liver lysates using CD147 antibody.



Western blot analysis of CD147/ Basigin in HeLa, C2C12 lysates using CD147/ Basigin antibody



Immunohistochemistry analysis of paraffin-embedded mouse lung using CD147 antibody. High-pressure and temperature Sodium Citrate pH 6.0 was used for antigen retrieval.