

Product datasheet for **TA383830S**

BRCA1 Rabbit Polyclonal Antibody

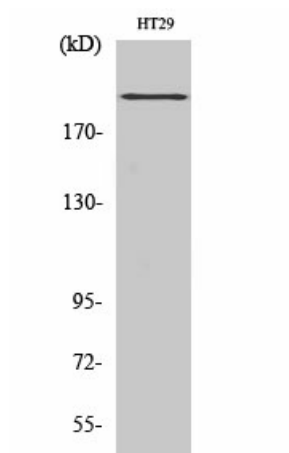
Product data:

Product Type:	Primary Antibodies
Applications:	ELISA, IF, IHC, WB
Recommended Dilution:	WB: 1/500-1/2000 IHC: 1/100-1/300 IF: 1/200-1/1000 ELISA: 1/5000
Reactivity:	Human, Rat
Host:	Rabbit
Isotype:	IgG
Clonality:	Polyclonal
Immunogen:	The antiserum was produced against synthesized peptide derived from human BRCA1. AA range:1391-1440
Formulation:	Liquid in PBS containing 50% glycerol, 0.5% BSA and 0.02% sodium azide, pH 7.3.
Concentration:	lot specific
Purification:	Affinity Purified
Conjugation:	Unconjugated
Storage:	Store at 4°C short term. Aliquot and store at -20°C long term. Avoid freeze/thaw cycles.
Stability:	1 year
Predicted Protein Size:	Observed MW (kDa): 208
Gene Name:	BRCA1, DNA repair associated
Database Link:	Entrez Gene 672 Human P38398
Background:	Swiss-Prot Acc.P38398.
Synonyms:	BRCA1; BRCC1; BROVCA1; IRIS; PSCP; RNF53

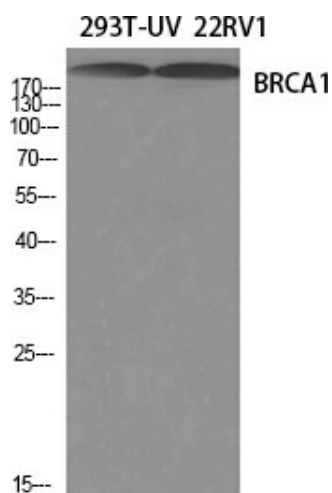


[View online »](#)

Product images:



Western blot analysis of BRCA1 in HT-29 lysates using BRCA1 antibody.



Western blot analysis of BRCA1 in 293TUV 22RV1 lysates using BRCA1 antibody.