

Product datasheet for **TA383830M**

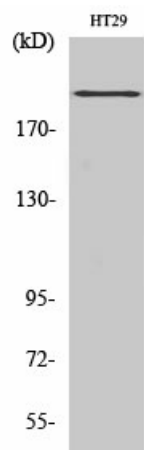
BRCA1 Rabbit Polyclonal Antibody

Product data:

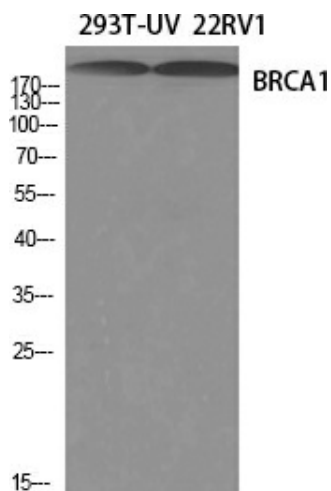
| | |
|-------------------------|---|
| Product Type: | Primary Antibodies |
| Applications: | ELISA, IF, IHC, WB |
| Recommended Dilution: | WB: 1/500-1/2000 IHC: 1/100-1/300 IF: 1/200-1/1000 ELISA: 1/5000 |
| Reactivity: | Human, Rat |
| Host: | Rabbit |
| Isotype: | IgG |
| Clonality: | Polyclonal |
| Immunogen: | The antiserum was produced against synthesized peptide derived from human BRCA1. AA range:1391-1440 |
| Formulation: | Liquid in PBS containing 50% glycerol, 0.5% BSA and 0.02% sodium azide, pH 7.3. |
| Concentration: | lot specific |
| Purification: | Affinity Purified |
| Conjugation: | Unconjugated |
| Storage: | Store at 4°C short term. Aliquot and store at -20°C long term. Avoid freeze/thaw cycles. |
| Stability: | 1 year |
| Predicted Protein Size: | Observed MW (kDa): 208 |
| Gene Name: | BRCA1, DNA repair associated |
| Database Link: | Entrez Gene 672 Human P38398 |
| Background: | Swiss-Prot Acc.P38398. |
| Synonyms: | BRCA1; BRCC1; BROVCA1; IRIS; PSCP; RNF53 |



[View online »](#)

Product images:


Western blot analysis of BRCA1 in HT-29 lysates using BRCA1 antibody.



Western blot analysis of BRCA1 in 293TUV 22RV1 lysates using BRCA1 antibody.