

Product datasheet for **TA383829S**

BAAT1 (BRAT1) Rabbit Monoclonal Antibody [Clone ID: R02-4D9]

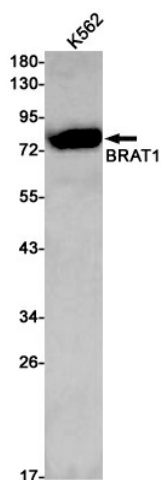
Product data:

Product Type:	Primary Antibodies
Clone Name:	R02-4D9
Applications:	IF, IP, WB
Recommended Dilution:	WB: 1/2000-1/10000 ICC/IF: 1/50 IP: 1/20
Reactivity:	Human
Host:	Rabbit
Isotype:	IgG
Clonality:	Monoclonal
Immunogen:	Recombinant protein of human BRAT1
Formulation:	50mM Tris-Glycine(pH 7.4), 0.15M NaCl, 40% Glycerol, 0.01% Sodium azide and 0.05% BSA
Concentration:	lot specific
Purification:	Affinity Purified
Conjugation:	Unconjugated
Storage:	Store at 4°C short term. Aliquot and store at -20°C long term. Avoid freeze/thaw cycles.
Stability:	1 year
Predicted Protein Size:	Calculated MW: 88 kDa; Observed MW: 88 kDa
Gene Name:	BRCA1 associated ATM activator 1
Database Link:	Entrez Gene 221927 Human Q6PJG6
Background:	Swiss-Prot Acc.Q6PJG6. Involved in DNA damage response; activates kinases ATM, SMC1A and PRKDC by modulating their phosphorylation status following ionizing radiation (IR) stress (PubMed:16452482, PubMed:22977523). Plays a role in regulating mitochondrial function and cell proliferation (PubMed:25070371). Required for protein stability of MTOR and MTOR-related proteins, and cell cycle progress by growth factors (PubMed:25657994).
Synonyms:	BAAT1; C7orf27; RMFSL

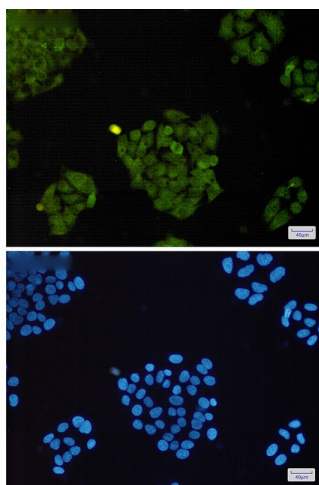


[View online »](#)

Product images:



Western blot analysis of BRAT1 in K562 lysates using BRAT1 antibody.



Immunocytochemistry analysis of BRAT1 (green) in HeLa using BRAT1 antibody, and DAPI (blue)