

## Product datasheet for **TA383827S**

### **BORA Rabbit Monoclonal Antibody [Clone ID: R06-5B4]**

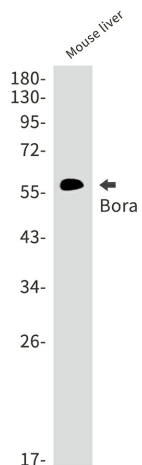
#### **Product data:**

Product Type:	Primary Antibodies
Clone Name:	R06-5B4
Applications:	IP, WB
Recommended Dilution:	WB: 1/1000 IP: 1/20
Reactivity:	Human, Mouse, Rat
Host:	Rabbit
Isotype:	IgG
Clonality:	Monoclonal
Immunogen:	Recombinant protein of human Bora
Formulation:	50mM Tris-Glycine(pH 7.4), 0.15M NaCl, 40% Glycerol, 0.01% Sodium azide and 0.05% BSA
Concentration:	lot specific
Purification:	Affinity Purified
Conjugation:	Unconjugated
Storage:	Store at 4°C short term. Aliquot and store at -20°C long term. Avoid freeze/thaw cycles.
Stability:	1 year
Predicted Protein Size:	Calculated MW: 61 kDa; Observed MW: 61 kDa
Gene Name:	bora, aurora kinase A activator
Database Link:	<a href="#">Entrez Gene 79866 Human Q6PGQ7</a>
Background:	Swiss-Prot Acc.Q6PGQ7.Required for the activation of AURKA at the onset of mitosis.
Synonyms:	6720463M24Rik; AI317232; RGD1309522

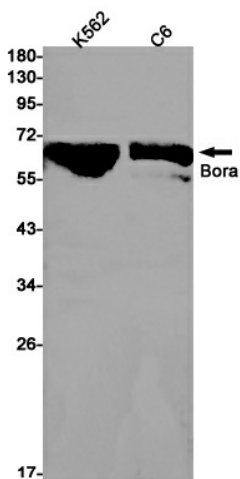


[View online »](#)

**Product images:**



Western blot analysis of Bora in mouse liver lysates using Bora antibody.



Western blot analysis of Bora in K562, C6 lysates using Bora antibody.