

Product datasheet for **TA383823M**

BNIP3 Rabbit Monoclonal Antibody [Clone ID: R09-1G8]

Product data:

| | |
|-------------------------|--|
| Product Type: | Primary Antibodies |
| Clone Name: | R09-1G8 |
| Applications: | IF, WB |
| Recommended Dilution: | WB: 1/1000 ICC/IF: 1/50 |
| Reactivity: | Human, Rat |
| Host: | Rabbit |
| Isotype: | IgG |
| Clonality: | Monoclonal |
| Immunogen: | A synthetic peptide of human BNIP3 |
| Formulation: | 50mM Tris-Glycine(pH 7.4), 0.15M NaCl, 40% Glycerol, 0.01% Sodium azide and 0.05% BSA |
| Concentration: | lot specific |
| Purification: | Affinity Purified |
| Conjugation: | Unconjugated |
| Storage: | Store at 4°C short term. Aliquot and store at -20°C long term. Avoid freeze/thaw cycles. |
| Stability: | 1 year |
| Predicted Protein Size: | Calculated MW: 28 kDa; Observed MW: 28 kDa |
| Gene Name: | BCL2/adenovirus E1B 19kDa interacting protein 3 |
| Database Link: | Entrez Gene 664 Human Q12983 |

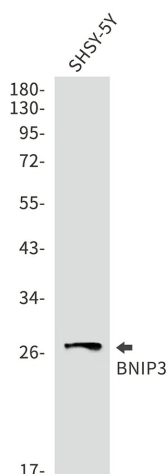
[View online »](#)

Background:

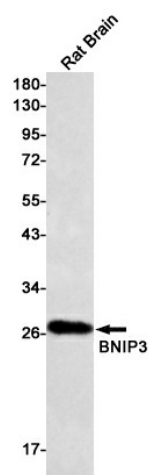
Swiss-Prot Acc.Q12983. Apoptosis-inducing protein that can overcome BCL2 suppression. May play a role in repartitioning calcium between the two major intracellular calcium stores in association with BCL2. Involved in mitochondrial quality control via its interaction with SPATA18/MIEAP: in response to mitochondrial damage, participates in mitochondrial protein catabolic process (also named MALM) leading to the degradation of damaged proteins inside mitochondria. The physical interaction of SPATA18/MIEAP, BNIP3 and BNIP3L/NIX at the mitochondrial outer membrane regulates the opening of a pore in the mitochondrial double membrane in order to mediate the translocation of lysosomal proteins from the cytoplasm to the mitochondrial matrix. Plays an important role in the calprotectin (S100A8/A9)-induced cell death pathway.

Synonyms:

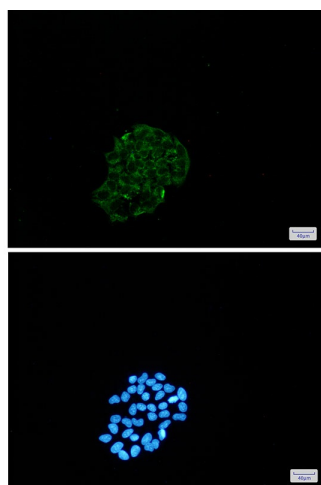
NIP3

Product images:


Western blot analysis of BNIP3 in SH-SY5Y lysates using BNIP3 antibody.



Western blot analysis of BNIP3 in rat Brain lysates using BNIP3 antibody.



Immunocytochemistry analysis of BNIP3(green) in Hela using BNIP3 antibody, and DAPI(blue)