

## Product datasheet for **TA383821S**

### **BMP4 Rabbit Monoclonal Antibody [Clone ID: R01-2G4]**

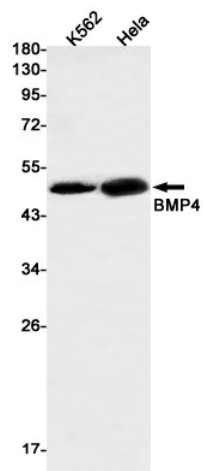
#### **Product data:**

<b>Product Type:</b>	Primary Antibodies
<b>Clone Name:</b>	R01-2G4
<b>Applications:</b>	IF, IP, WB
<b>Recommended Dilution:</b>	WB: 1/2000-1/10000 ICC/IF: 1/100-1/100 IP: 1/20
<b>Reactivity:</b>	Human
<b>Host:</b>	Rabbit
<b>Isotype:</b>	IgG
<b>Clonality:</b>	Monoclonal
<b>Immunogen:</b>	A synthetic peptide of human BMP4
<b>Formulation:</b>	50mM Tris-Glycine(pH 7.4), 0.15M NaCl, 40% Glycerol, 0.01% Sodium azide and 0.05% BSA
<b>Concentration:</b>	lot specific
<b>Purification:</b>	Affinity Purified
<b>Conjugation:</b>	Unconjugated
<b>Storage:</b>	Store at 4°C short term. Aliquot and store at -20°C long term. Avoid freeze/thaw cycles.
<b>Stability:</b>	1 year
<b>Predicted Protein Size:</b>	Calculated MW: 47 kDa; Observed MW: 47 kDa
<b>Gene Name:</b>	bone morphogenetic protein 4
<b>Database Link:</b>	<a href="#">Entrez Gene 652 Human P12644</a>
<b>Background:</b>	Swiss-Prot Acc.P12644.Induces cartilage and bone formation. Also acts in mesoderm induction, tooth development, limb formation and fracture repair. Acts in concert with PTHLH/PTHRP to stimulate ductal outgrowth during embryonic mammary development and to inhibit hair follicle induction .
<b>Synonyms:</b>	BMP-2B; BMP-4; BMP2B; BMP2B1; DVR4; MCOPS6; OFC11; ZYME

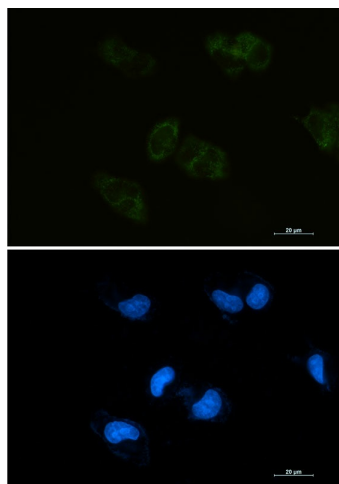


[View online »](#)

## Product images:



Western blot analysis of BMP4 in K562, HeLa lysates using BMP4 antibody.



Immunocytochemistry analysis of BMP4 (green) in HEPG2 using BMP4 antibody, and DAPI (blue).