

Product datasheet for **TA383821M**

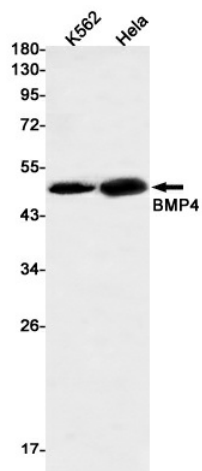
BMP4 Rabbit Monoclonal Antibody [Clone ID: R01-2G4]

Product data:

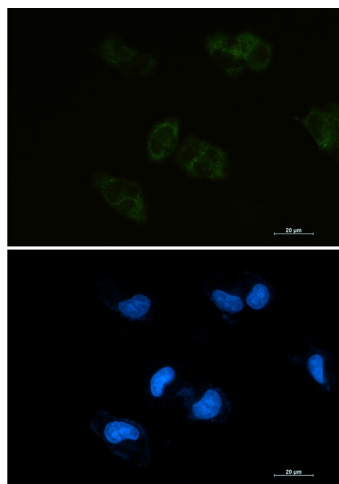
Product Type:	Primary Antibodies
Clone Name:	R01-2G4
Applications:	IF, IP, WB
Recommended Dilution:	WB: 1/2000-1/10000 ICC/IF: 1/100-1/100 IP: 1/20
Reactivity:	Human
Host:	Rabbit
Isotype:	IgG
Clonality:	Monoclonal
Immunogen:	A synthetic peptide of human BMP4
Formulation:	50mM Tris-Glycine(pH 7.4), 0.15M NaCl, 40% Glycerol, 0.01% Sodium azide and 0.05% BSA
Concentration:	lot specific
Purification:	Affinity Purified
Conjugation:	Unconjugated
Storage:	Store at 4°C short term. Aliquot and store at -20°C long term. Avoid freeze/thaw cycles.
Stability:	1 year
Predicted Protein Size:	Calculated MW: 47 kDa; Observed MW: 47 kDa
Gene Name:	bone morphogenetic protein 4
Database Link:	Entrez Gene 652 Human P12644
Background:	Swiss-Prot Acc.P12644.Induces cartilage and bone formation. Also acts in mesoderm induction, tooth development, limb formation and fracture repair. Acts in concert with PTHLH/PTHRP to stimulate ductal outgrowth during embryonic mammary development and to inhibit hair follicle induction .
Synonyms:	BMP-2B; BMP-4; BMP2B; BMP2B1; DVR4; MCOPS6; OFC11; ZYME

[View online »](#)

Product images:



Western blot analysis of BMP4 in K562, HeLa lysates using BMP4 antibody.



Immunocytochemistry analysis of BMP4 (green) in HEPG2 using BMP4 antibody, and DAPI (blue).