

Product datasheet for **TA383819M**

BIN1 Rabbit Monoclonal Antibody [Clone ID: R07-2C1]

Product data:

Product Type:	Primary Antibodies
Clone Name:	R07-2C1
Applications:	IF, IHC, WB
Recommended Dilution:	WB: 1/1000 IHC: 1/20 ICC/IF: 1/20
Reactivity:	Human, Mouse, Rat
Host:	Rabbit
Isotype:	IgG
Clonality:	Monoclonal
Immunogen:	Recombinant protein of human BIN1
Formulation:	50mM Tris-Glycine(pH 7.4), 0.15M NaCl, 40% Glycerol, 0.01% Sodium azide and 0.05% BSA
Concentration:	lot specific
Purification:	Affinity Purified
Conjugation:	Unconjugated
Storage:	Store at 4°C short term. Aliquot and store at -20°C long term. Avoid freeze/thaw cycles.
Stability:	1 year
Predicted Protein Size:	Calculated MW: 65 kDa; Observed MW: 45-80 kDa
Gene Name:	bridging integrator 1
Database Link:	Entrez Gene 274 Human O00499

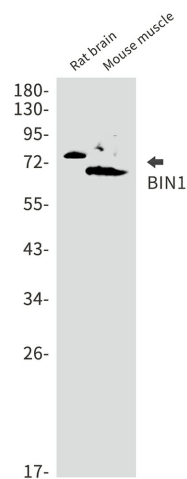

[View online »](#)

Background:

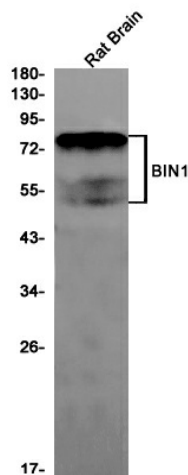
Swiss-Prot Acc.O00499. Is a key player in the control of plasma membrane curvature, membrane shaping and membrane remodeling. Required in muscle cells for the formation of T-tubules, tubular invaginations of the plasma membrane that function in depolarization-contraction coupling (PubMed:24755653). Is a negative regulator of endocytosis. Is also involved in the regulation of intracellular vesicles sorting, modulation of BACE1 trafficking and the control of amyloid-beta production (PubMed:27179792). In neuronal circuits, endocytosis regulation may influence the internalization of PHF-tau aggregates. May be involved in the regulation of MYC activity and the control cell proliferation (PubMed:8782822). Has actin bundling activity and stabilizes actin filaments against depolymerization in vitro (PubMed:28893863).

Synonyms:

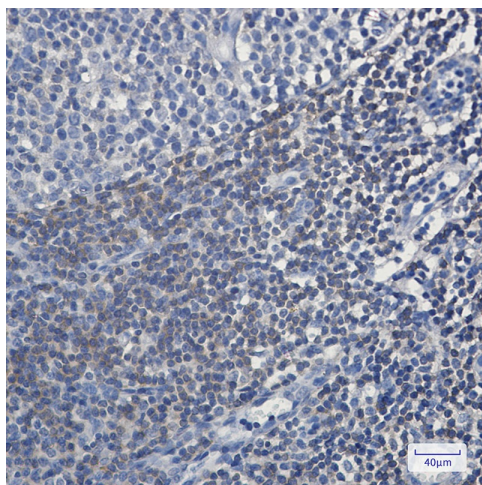
AMPH2; amphiphysin-like; AMPHL; DKFZp547F068; MGC10367; OTTHUMP00000203785; SH3P9

Product images:


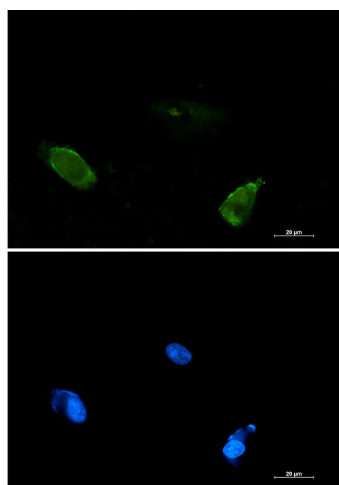
Western blot analysis of BIN1 in rat brain, mouse muscle lysates using BIN1 antibody.



Western blot analysis of BIN1 in rat Brain lysates using BIN1 antibody



Immunohistochemistry analysis of paraffin-embedded Human tonsil using BIN1 antibody. High-pressure and temperature Sodium Citrate pH 6.0 was used for antigen retrieval.



Immunocytochemistry analysis of BIN1 (green) in U87-MG using BIN1 antibody, and DAPI (blue).