

Product datasheet for **TA383817**

Bestrophin 2 (BEST2) Rabbit Polyclonal Antibody

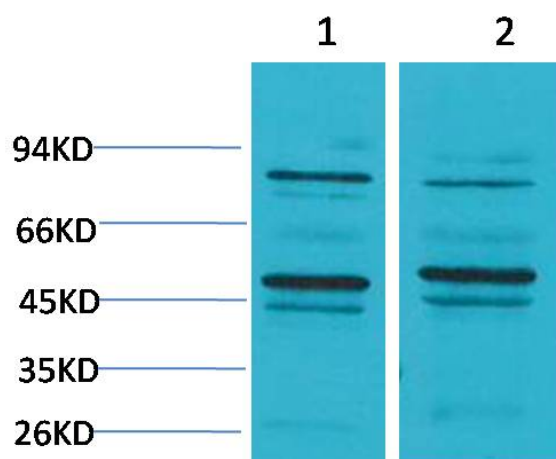
Product data:

Product Type:	Primary Antibodies
Applications:	IHC, WB
Recommended Dilution:	WB: 1/500-1000 IHC: 1/200-500
Reactivity:	Mouse, Rat
Host:	Rabbit
Isotype:	IgG
Clonality:	Polyclonal
Immunogen:	Synthetic Peptide of BEST2
Formulation:	Liquid in PBS containing 50% glycerol, 0.5% BSA and 0.02% sodium azide, pH 7.3.
Concentration:	lot specific
Purification:	Affinity Purified
Conjugation:	Unconjugated
Storage:	Store at 4°C short term. Aliquot and store at -20°C long term. Avoid freeze/thaw cycles.
Stability:	1 year
Predicted Protein Size:	Observed MW (kDa):50
Gene Name:	bestrophin 2
Database Link:	Q8NFU1
Background:	Swiss-Prot Acc.Q8NFU1.
Synonyms:	FLJ20132; VMD2L1



[View online »](#)

Product images:



Western blot analysis of Bestrophin 2 in mouse Brain, rat Brain lysates using Bestrophin2 antibody.