

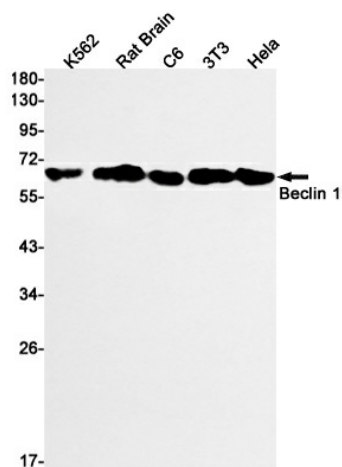
## Product datasheet for **TA383816M**

### Beclin 1 (BECN1) Rabbit Monoclonal Antibody [Clone ID: R02-8D5]

#### Product data:

Product Type:	Primary Antibodies
Clone Name:	R02-8D5
Applications:	IP, WB
Recommended Dilution:	WB: 1/1000 IP: 1/20
Reactivity:	Human, Mouse, Rat
Host:	Rabbit
Isotype:	IgG
Clonality:	Monoclonal
Immunogen:	Recombinant protein of human Beclin 1
Formulation:	50mM Tris-Glycine(pH 7.4), 0.15M NaCl, 40% Glycerol, 0.01% Sodium azide and 0.05% BSA
Concentration:	lot specific
Purification:	Affinity Purified
Conjugation:	Unconjugated
Storage:	Store at 4°C short term. Aliquot and store at -20°C long term. Avoid freeze/thaw cycles.
Stability:	1 year
Predicted Protein Size:	Calculated MW: 52 kDa; Observed MW: 60 kDa
Gene Name:	beclin 1
Database Link:	<a href="#">Entrez Gene 8678 Human Q14457</a>
Background:	Swiss-Prot Acc.Q14457.
Synonyms:	ATG6; beclin1; GT197; VPS30

[View online »](#)

**Product images:**

Western blot analysis of Beclin 1 in K562, rat Brain, C6, 3T3, HeLa lysates using Beclin 1 antibody.