

## Product datasheet for **TA383813S**

### **Bcl x (BCL2L1) Rabbit Polyclonal Antibody**

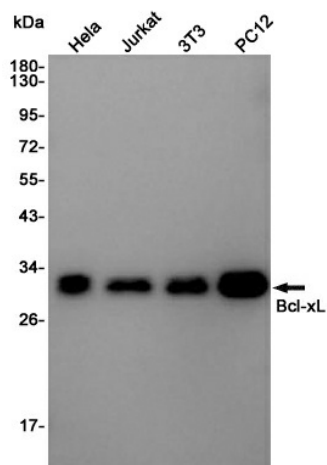
#### **Product data:**

<b>Product Type:</b>	Primary Antibodies
<b>Applications:</b>	FC, IHC, IP, WB
<b>Recommended Dilution:</b>	WB: 1/1000 IHC: 1/200 FC: 1/20 IP: 1/30
<b>Reactivity:</b>	Human, Mouse, Rat
<b>Host:</b>	Rabbit
<b>Isotype:</b>	IgG
<b>Clonality:</b>	Polyclonal
<b>Immunogen:</b>	A synthetic peptide of human Bcl-XL
<b>Formulation:</b>	50mM Tris-Glycine(pH 7.4), 0.15M NaCl, 40% Glycerol, 0.01% Sodium azide and 0.05% BSA
<b>Concentration:</b>	lot specific
<b>Purification:</b>	Affinity Purified
<b>Conjugation:</b>	Unconjugated
<b>Storage:</b>	Store at 4°C short term. Aliquot and store at -20°C long term. Avoid freeze/thaw cycles.
<b>Stability:</b>	1 year
<b>Predicted Protein Size:</b>	Calculated MW: 26 kDa; Observed MW: 30 kDa
<b>Gene Name:</b>	BCL2 like 1
<b>Database Link:</b>	<a href="#">Entrez Gene 598 Human Q07817</a>
<b>Background:</b>	Swiss-Prot Acc.Q07817.
<b>Synonyms:</b>	Bcl-X; bcl-xL; BCL-XL/S; bcl-xS; Bcl2-L-1; BCL2L; BCLX; DKFZp781P2092; OTTHUMP00000030550

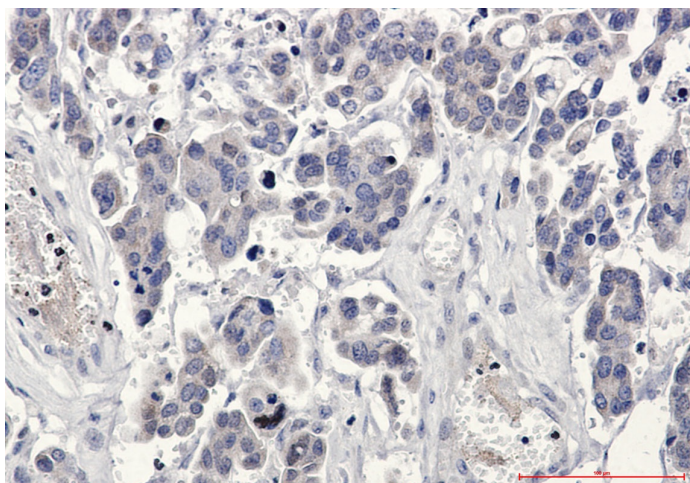


[View online »](#)

## Product images:



Western blot analysis of Bcl-XL in HeLa, Jurkat, 3T3, PC-12 lysates using Bcl-XL antibody.



Immunohistochemistry analysis of paraffin-embedded Human Cholangiocarcinoma using Bcl-XL antibody. High-pressure and temperature Sodium Citrate pH 6.0 was used for antigen retrieval.