

## Product datasheet for **TA383813M**

### **Bcl x (BCL2L1) Rabbit Polyclonal Antibody**

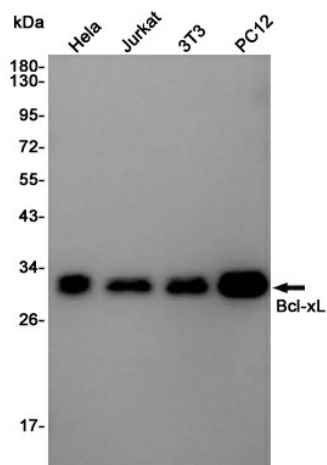
#### **Product data:**

Product Type:	Primary Antibodies
Applications:	FC, IHC, IP, WB
Recommended Dilution:	WB: 1/1000 IHC: 1/200 FC: 1/20 IP: 1/30
Reactivity:	Human, Mouse, Rat
Host:	Rabbit
Isotype:	IgG
Clonality:	Polyclonal
Immunogen:	A synthetic peptide of human Bcl-XL
Formulation:	50mM Tris-Glycine(pH 7.4), 0.15M NaCl, 40% Glycerol, 0.01% Sodium azide and 0.05% BSA
Concentration:	lot specific
Purification:	Affinity Purified
Conjugation:	Unconjugated
Storage:	Store at 4°C short term. Aliquot and store at -20°C long term. Avoid freeze/thaw cycles.
Stability:	1 year
Predicted Protein Size:	Calculated MW: 26 kDa; Observed MW: 30 kDa
Gene Name:	BCL2 like 1
Database Link:	<a href="#">Entrez Gene 598 Human Q07817</a>
Background:	Swiss-Prot Acc.Q07817.
Synonyms:	Bcl-X; bcl-xL; BCL-XL/S; bcl-xS; Bcl2-L-1; BCL2L; BCLX; DKFZp781P2092; OTTHUMP00000030550

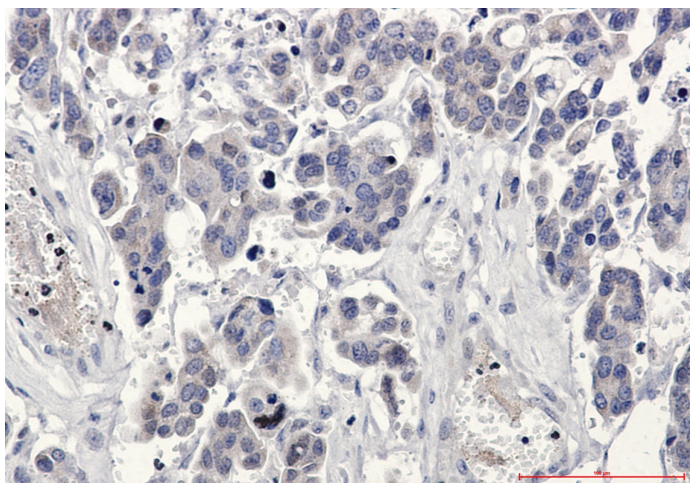


[View online »](#)

## Product images:



Western blot analysis of Bcl-XL in HeLa, Jurkat, 3T3, PC-12 lysates using Bcl-XL antibody.



Immunohistochemistry analysis of paraffin-embedded Human Cholangiocarcinoma using Bcl-XL antibody. High-pressure and temperature Sodium Citrate pH 6.0 was used for antigen retrieval.