

## Product datasheet for **TA383812M**

### **BCL2 Rabbit Monoclonal Antibody [Clone ID: R07-2A1]**

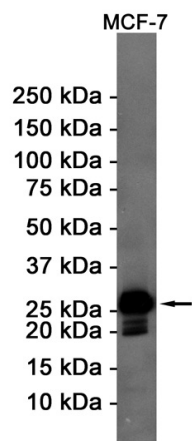
#### **Product data:**

Product Type:	Primary Antibodies
Clone Name:	R07-2A1
Applications:	IHC, WB
Recommended Dilution:	WB: 1/1000 IHC: 1/20-1/500
Reactivity:	Human, Mouse
Host:	Rabbit
Isotype:	IgG
Clonality:	Monoclonal
Immunogen:	Recombinant protein of human Bcl-2
Formulation:	50mM Tris-Glycine(pH 7.4), 0.15M NaCl, 40% Glycerol, 0.01% Sodium azide and 0.05% BSA
Concentration:	lot specific
Purification:	Affinity Purified
Conjugation:	Unconjugated
Storage:	Store at 4°C short term. Aliquot and store at -20°C long term. Avoid freeze/thaw cycles.
Stability:	1 year
Predicted Protein Size:	Calculated MW: 26 kDa; Observed MW: 26 kDa
Gene Name:	B-cell CLL/lymphoma 2
Database Link:	<a href="#">Entrez Gene 596 Human P10415</a>
Background:	Swiss-Prot Acc.P10415.Suppresses apoptosis in a variety of cell systems including factor-dependent lymphohematopoietic and neural cells. Regulates cell death by controlling the mitochondrial membrane permeability. Appears to function in a feedback loop system with caspases. Inhibits caspase activity either by preventing the release of cytochrome c from the mitochondria and/or by binding to the apoptosis-activating factor (APAF-1). May attenuate inflammation by impairing NLRP1-inflammasome activation, hence CASP1 activation and IL1B release (PubMed:17418785).

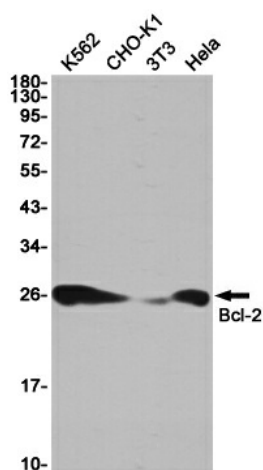
[View online »](#)

**Synonyms:** Bcl-2; OTTHUMP00000163680

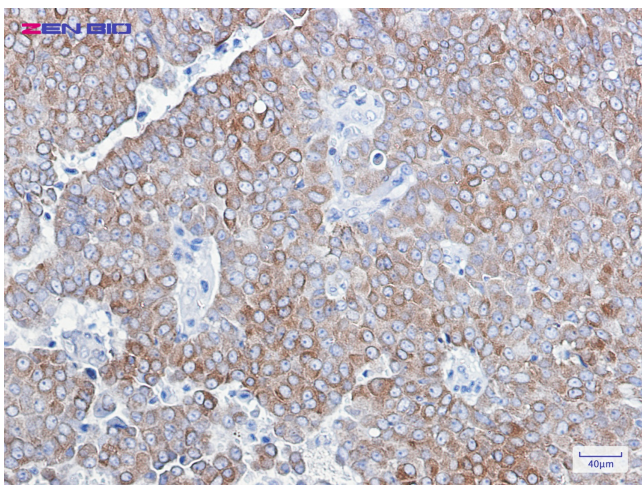
**Product images:**



Western blot detection of Bcl-2 in MCF-7 cell lysates using Bcl-2 Rabbit mAb(1:1000 diluted). Predicted band size:26KDa.Observed band size:26KDa.



Western blot detection of Bcl-2 in K562,CHO-K1,3T3,HeLa cell lysates using Bcl-2 Rabbit mAb(1:1000 diluted).Predicted band size:26KDa.Observed band size:26KDa.



Immunohistochemistry of Bcl-2 in paraffin-embedded Human breast cancer tissue using Bcl-2 Rabbit mAb at dilution 1/1