

Product datasheet for **TA383812**

BCL2 Rabbit Monoclonal Antibody [Clone ID: R07-2A1]

Product data:

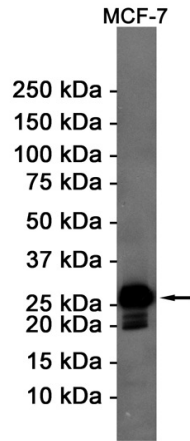
| | |
|--------------------------------|--|
| Product Type: | Primary Antibodies |
| Clone Name: | R07-2A1 |
| Applications: | IHC, WB |
| Recommended Dilution: | WB: 1/1000 IHC: 1/20-1/500 |
| Reactivity: | Human, Mouse |
| Host: | Rabbit |
| Isotype: | IgG |
| Clonality: | Monoclonal |
| Immunogen: | Recombinant protein of human Bcl-2 |
| Formulation: | 50mM Tris-Glycine(pH 7.4), 0.15M NaCl, 40% Glycerol, 0.01% Sodium azide and 0.05% BSA |
| Concentration: | lot specific |
| Purification: | Affinity Purified |
| Conjugation: | Unconjugated |
| Storage: | Store at 4°C short term. Aliquot and store at -20°C long term. Avoid freeze/thaw cycles. |
| Stability: | 1 year |
| Predicted Protein Size: | Calculated MW: 26 kDa; Observed MW: 26 kDa |
| Gene Name: | B-cell CLL/lymphoma 2 |
| Database Link: | Entrez Gene 596 Human P10415 |
| Background: | Swiss-Prot Acc.P10415.Suppresses apoptosis in a variety of cell systems including factor-dependent lymphohematopoietic and neural cells. Regulates cell death by controlling the mitochondrial membrane permeability. Appears to function in a feedback loop system with caspases. Inhibits caspase activity either by preventing the release of cytochrome c from the mitochondria and/or by binding to the apoptosis-activating factor (APAF-1). May attenuate inflammation by impairing NLRP1-inflammasome activation, hence CASP1 activation and IL1B release (PubMed:17418785). |



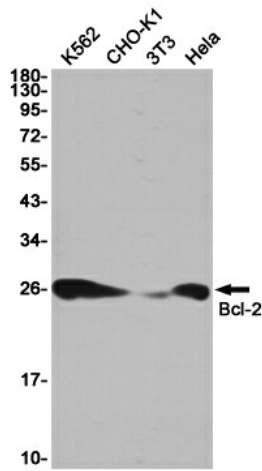
[View online »](#)

Synonyms: Bcl-2; OTTHUMP00000163680

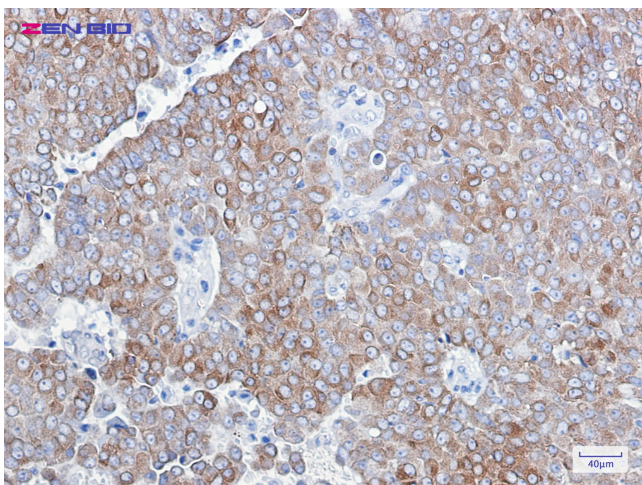
Product images:



Western blot detection of Bcl-2 in MCF-7 cell lysates using Bcl-2 Rabbit mAb(1:1000 diluted).Predicted band size:26KDa.Observed band size:26KDa.



Western blot detection of Bcl-2 in K562,CHO-K1,3T3,HeLa cell lysates using Bcl-2 Rabbit mAb(1:1000 diluted).Predicted band size:26KDa.Observed band size:26KDa.



Immunohistochemistry of Bcl-2 in paraffin-embedded Human breast cancer tissue using Bcl-2 Rabbit mAb at dilution 1/1