

## Product datasheet for **TA383811S**

### **BCL2 Rabbit Monoclonal Antibody [Clone ID: R03-9E1]**

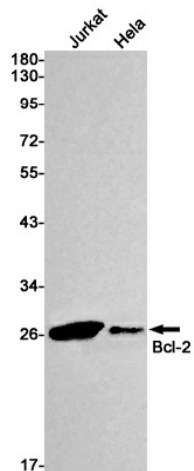
#### **Product data:**

Product Type:	Primary Antibodies
Clone Name:	R03-9E1
Applications:	IHC, IP, WB
Recommended Dilution:	WB: 1/1000 IHC: 1/20-1/500 IP: 1/30
Reactivity:	Human
Host:	Rabbit
Isotype:	IgG
Clonality:	Monoclonal
Immunogen:	A synthetic peptide of human Bcl-2
Formulation:	50mM Tris-Glycine(pH 7.4), 0.15M NaCl, 40% Glycerol, 0.01% Sodium azide and 0.05% BSA
Concentration:	lot specific
Purification:	Affinity Purified
Conjugation:	Unconjugated
Storage:	Store at 4°C short term. Aliquot and store at -20°C long term. Avoid freeze/thaw cycles.
Stability:	1 year
Predicted Protein Size:	Calculated MW: 26 kDa; Observed MW: 26 kDa
Gene Name:	B-cell CLL/lymphoma 2
Database Link:	<a href="#">Entrez Gene 596 Human P10415</a>
Background:	Swiss-Prot Acc.P10415.
Synonyms:	Bcl-2; OTTHUMP00000163680

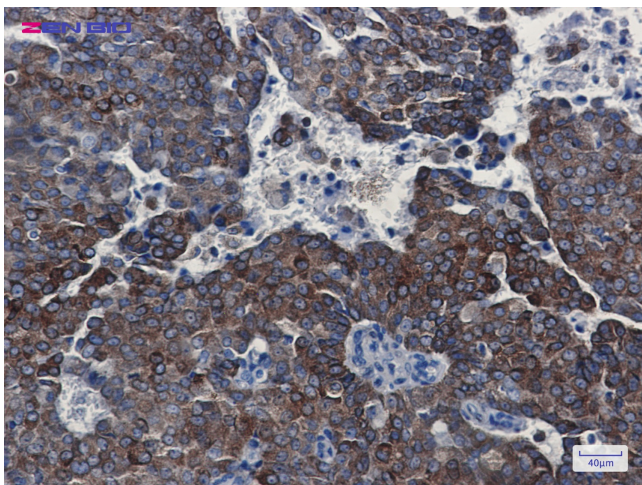


[View online »](#)

## Product images:



Western blot analysis of Bcl2 in Jurkat, HeLa lysates using Bcl2 antibody.



Immunohistochemistry of Bcl-2 in paraffin-embedded Human breast cancer tissue using Bcl-2 Rabbit mAb at dilution 1/100