

Product datasheet for **TA383808**

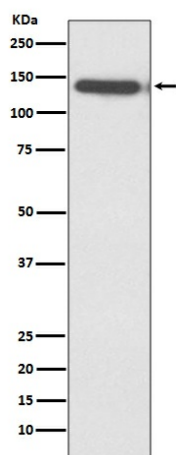
CTIP2 (BCL11B) Rabbit Polyclonal Antibody

Product data:

Product Type:	Primary Antibodies
Applications:	WB
Recommended Dilution:	WB: 1/500-1/2000
Reactivity:	Human
Host:	Rabbit
Isotype:	IgG
Clonality:	Polyclonal
Immunogen:	A synthesized peptide derived from human Ctip2
Formulation:	Rabbit IgG in phosphate buffered saline , pH 7.4, 150mM NaCl, 0.02% sodium azide and 50% glycerol.
Concentration:	lot specific
Purification:	Affinity Chromatography
Conjugation:	Unconjugated
Storage:	Store at 4°C short term. Aliquot and store at -20°C long term. Avoid freeze/thaw cycles.
Stability:	1 year
Predicted Protein Size:	140kDa
Gene Name:	B-cell CLL/lymphoma 11B
Database Link:	Entrez Gene 64919 Human Q9C0K0
Background:	Swiss-Prot Acc.Q9C0K0.Tumor-suppressor protein involved in T-cell lymphomas. May function on the P53-signaling pathway. May be a key regulator of both differentiation and survival during thymocyte development. Repress transcription through direct, TFCOUP2-independent binding to a GC-rich response element.
Synonyms:	CTIP-2; CTIP2; hRit1; hRIT1-alpha; RIT1



[View online »](#)

Product images:

Western blot analysis of CtIP2 in Jurkat lysates using CtIP2 antibody.