

Product datasheet for **TA383807M**

Bcl2 Binding component 3 (BBC3) Rabbit Monoclonal Antibody [Clone ID: R05-9C7]

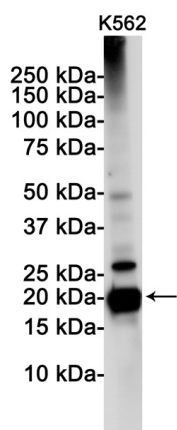
Product data:

Product Type:	Primary Antibodies
Clone Name:	R05-9C7
Applications:	IF, IHC, WB
Recommended Dilution:	WB: 1/1000 IHC: 1/20-1/100 ICC/IF: 1/50-1/100
Reactivity:	Human, Mouse, Rat
Host:	Rabbit
Isotype:	IgG
Clonality:	Monoclonal
Immunogen:	A synthetic peptide of human PUMA
Formulation:	50mM Tris-Glycine(pH 7.4), 0.15M NaCl, 40% Glycerol, 0.01% Sodium azide and 0.05% BSA
Concentration:	lot specific
Purification:	Affinity Purified
Conjugation:	Unconjugated
Storage:	Store at 4°C short term. Aliquot and store at -20°C long term. Avoid freeze/thaw cycles.
Stability:	1 year
Predicted Protein Size:	Calculated MW: 21 kDa; Observed MW: 21 kDa
Gene Name:	BCL2 binding component 3
Database Link:	Entrez Gene 27113 Human Q9BXH1
Background:	Swiss-Prot Acc.Q9BXH1.Essential mediator of p53/TP53-dependent and p53/TP53-independent apoptosis (PubMed:11463391). Functions by promoting partial unfolding of BCL2L1 and dissociation of BCL2L1 from p53/TP53. Regulates ER stress-induced neuronal apoptosis (PubMed:23340338).
Synonyms:	FLJ42994; JFY-1; JFY1; PUMA

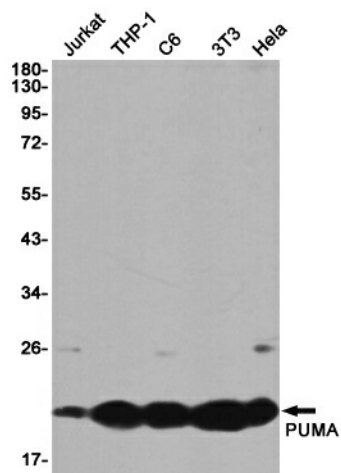


[View online »](#)

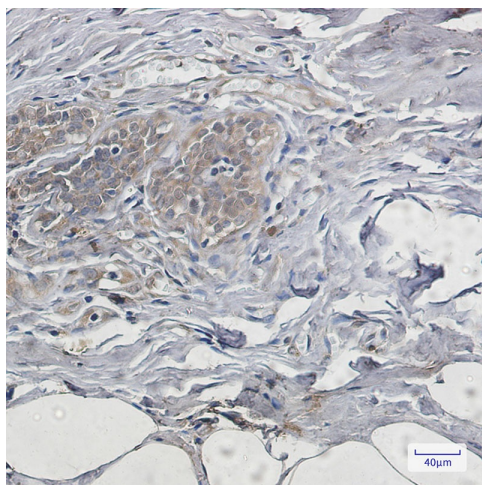
Product images:



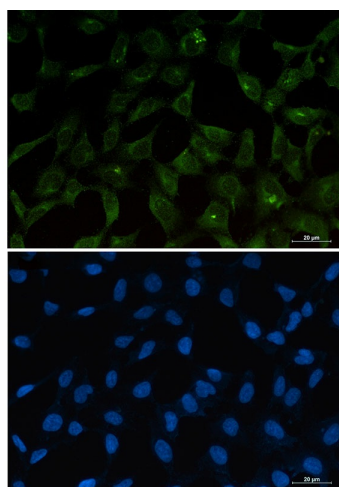
Western blot analysis of PUMA in K562 lysates using PUMA antibody.



Western blot analysis of PUMA in Jurkat, THP-1, C6, 3T3, HeLa lysates using PUMA antibody



Immunohistochemistry analysis of paraffin-embedded Human breast cancer using PUMA antibody. High-pressure and temperature Sodium Citrate pH 6.0 was used for antigen retrieval.



Immunocytochemistry analysis of PUMA (green) in 293T using PUMA antibody, and DAPI (blue).